



PRODUCT SUBSTITUTION REQUEST FORM

TO: _____

PROJECT NAME: _____

PROJECT LOCATION: _____

SPECIFIED PRODUCT: _____

PROPOSED PRODUCT SUBSTITUTION (CIRCLE ONE):

DRIWALL RAINSCREEN 020-1 DRIWALL RAINSCREEN 10MM DRIWALL RAINSCREEN 075-1

PLEASE FIND ATTACHED:

- PRODUCT DESCRIPTIONS

SUBMITTED BY:

NAME: _____

PHONE: _____

DATE: _____

E-MAIL: _____

COMPANY: _____

ARCHITECT/ENGINEER:

PRODUCT ACCEPTED

PRODUCT REJECTED

NAME: _____

DATE: _____

SIGNATURE: _____

NOTES:

DRIWALL RAINSCREEN 020-1 PRODUCT DESCRIPTION:

Driwall Rainscreen 020-1 is a nominal 0.25-inch (6mm), randomly oriented, geometric patterned drainage and ventilation mat. It is designed to eliminate moisture and moisture vapor in stucco, manufactured stone, thin stone, wood siding, fiber-cement siding, and brick. Driwall Rainscreen is produced from an extruded polymer matrix of tangled monofilaments. The three-dimensional mat is heat-laminated to a non-woven lightweight, breathable fabric in order to provide a separation from cementitious veneers. The monofilaments are heat-welded at the junctions to form a structure that spaces exterior veneer away from the inner sheathing. The product is useful in cavity wall designs and rainscreen systems, in which an airspace is needed for drainage and ventilation. When Driwall Rainscreen is used, no mortar or other debris can enter the cavity, which ensures proper drainage and ventilation.

APPLICATIONS: STUCCO, MANUFACTURED STONE, THIN STONE, WOOD SIDING, FIBER-CEMENT SIDING, BRICK

DRIWALL RAINSCREEN 10MM PRODUCT DESCRIPTION:

Driwall Rainscreen 10mm is a nominal 0.40-inch (10mm), randomly oriented, geometric patterned drainage and ventilation mat. It is designed to eliminate moisture and moisture vapor in stucco, manufactured stone, thin stone, wood siding, fiber-cement siding, and brick. Driwall Rainscreen is produced from an extruded polymer matrix of tangled monofilaments. The three-dimensional mat is heat-laminated to a non-woven lightweight, breathable fabric in order to provide a separation from cementitious veneers. The monofilaments are heat-welded at the junctions to form a structure that spaces exterior veneer away from the inner sheathing. The product is useful in cavity wall designs and rainscreen systems, in which an airspace is needed for drainage and ventilation. When Driwall Rainscreen is used, no mortar or other debris can enter the cavity, which ensures proper drainage and ventilation.

APPLICATIONS: STUCCO, MANUFACTURED STONE, THIN STONE, WOOD SIDING, FIBER-CEMENT SIDING, BRICK

DRIWALL RAINSCREEN 075-1 PRODUCT DESCRIPTION:

Driwall Rainscreen 075-1 is a nominal 0.75-inch (19mm), randomly oriented, geometric patterned drainage and ventilation mat. It is designed to eliminate moisture and moisture vapor in brick, and stone masonry. Driwall Rainscreen is produced from an extruded polymer matrix of tangled monofilaments. The three-dimensional mat is heat-laminated to a non-woven lightweight, breathable fabric in order to provide a separation from cementitious veneers. The monofilaments are heat-welded at the junctions to form a structure that spaces exterior veneer away from the inner sheathing. The product is useful in cavity wall designs and rainscreen systems, in which an airspace is needed for drainage and ventilation. When Driwall Rainscreen is used, no mortar or other debris can enter the cavity, which ensures proper drainage and ventilation.

APPLICATIONS: BRICK, STONE MASONRY

Product Data

Driwall™ Rainscreen 020-1 (1/4")

A Drainage and Ventilation Mat

Description

Driwall™ Rainscreen 020-1 6mm is a nominal 0.25-inch, randomly oriented, geometric patterned drainage and ventilation mat.

It is designed to eliminate moisture and moisture vapor in masonry and other siding. Driwall™ Rainscreen is produced from an extruded polymer matrix of tangled monofilaments. The three-dimensional mat is heat-laminated to a non-woven lightweight, breathable fabric in order to provide a separation from cementitious sidings. The monofilaments are heat-welded at the junctions to form a structure that spaces exterior veneer away from the inner sheathing.

The product is useful in cavity wall designs and rainscreen systems in which an airspace is needed for drainage and ventilation. When DRIWALL™ RAINSCREEN is used, no mortar or other debris can enter the cavity, which ensures proper drainage and ventilation.

Applications

- ✓ Stucco
- ✓ Thin stone or brick
- ✓ Manufactured stone
- ✓ Stone and brick masonry
- ✓ Fiber cement board siding
- ✓ Wood siding

Features and Benefits

Driwall Rainscreen products PASS multiple wall assemblies that require NFPA 285

Driwall Rainscreen products have ASTM 2273 approval

Drainage of excess moisture and ventilation in one product

Lightweight and easy to handle

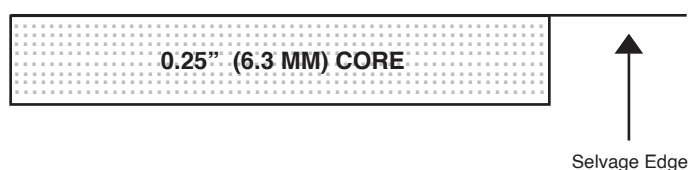
Simple installation with mechanical staple hammer

Polymer core is resistant to most known corrosive chemicals, including solvents

Wide rolls for fewer seams

Core ABSORBS and RELEASES NO MOISTURE

Provides no source for the promotion of MOLD, MILDEW or BACTERIA



Physical Properties

Description	Means of Measurement English/Metric		Value English/Metric	
Flame Spread	ASTM E84		Class A	
Core Polymer	Polymeric			
Thickness	in.	mm	0.25	6.3
Total Weight	oz/yd ²	g/m ²	12.7	403.6
Core Weight	oz/yd ²	g/m ²	10.8	366.2
Fabric Weight	oz/yd ²	g/m ²	1.9	64.0

Packaging

Description	Means of Measurement English/Metric		Value English/Metric	
Core Width	in.	mm	48.0	1,219.2
Length	ft	m	65.0	19.8
Area	sq ft	sq m	260	24.2
Roll Diameter	in.	mm	16.0	406.4
Roll Weight	lb	kg	19.5	8.8

See installation instructions for methods and procedures.

25 YEAR LIMITED WARRANTY

KEENE BUILDING PRODUCTS, INC. DRIWALL RAINSCREEN

Keene Building Products, Inc. ("Keene") warrants its DRIWALL RAINSCREEN products against defects in material and workmanship for a period of Twenty-Five (25) years from the date of installation. Upon receipt of written notice, which must be given no later than thirty (30) days after discovery of the defect, Keene, at its sole option, will repair or replace the defective item(s) or refund the purchase price. Keene, at its sole option, may request that the defective item(s) be returned to Keene's principal offices for investigation and inspection. Keene is not required to repair or replace the defective item(s) or to refund the purchase price until it has received such item(s) that Keene has requested returned and has inspected such item(s).

The warranty provided above is extended solely to the person or entity that purchases the product directly from Keene, and no third party may rely thereon or assert any claim based on such warranty. The foregoing warranty is the only warranty provided by Keene and is to the exclusion of any other warranty, whether express or implied, including the implied warranties of merchantability and fitness for a particular purpose, all of which are expressly disclaimed. Keene's liability, if any, for damages based on any claim of any kind whatsoever, and regardless of the legal theory, with regard to any of its products shall be limited to the actual purchase price of the product(s) with respect to which such claim is made.

UNDER NO CIRCUMSTANCES SHALL KEENE BE LIABLE TO PURCHASER FOR COMPENSATION, REIMBURSEMENT OR DAMAGES ON ACCOUNT OF THE LOSS OF PRESENT OR PROSPECTIVE PROFITS OR REVENUE, EXPENDITURES, INVESTMENTS OR COMMITMENTS, AND IN NO EVENT SHALL KEENE BE LIABLE TO PURCHASER OR ANY OTHER PERSON OR ENTITY FOR SPECIAL, INCIDENTAL, INDIRECT, CONSEQUENTIAL OR EXEMPLARY DAMAGES. By way of example only, Keene will not be responsible for any damages purchaser may incur that are related to surface, subsurface or building conditions, damage to the structure or contents of any building, or for costs of repair and replacement except as may be expressly provided in this Limited Warranty (and subject to the terms and conditions hereof).

Keene shall not be liable for product failure resulting from any of the following: (i) products not installed in accordance with Keene's installation instructions; (ii) non-compliance with applicable building codes and regulations; (iii) the use of any of its products (A) in a manner for which it was not intended; (B) in a modified form without the permission of Keene, or (C) in combination with any other system, equipment or device not manufactured or sold by Keene.

Keene may change, modify, amend, replace or discontinue offering a product warranty, limited or otherwise. Any such change, modification, amendment, replacement or discontinuance shall be applicable to unsold products only, and Keene shall endeavor to give purchaser at least thirty (30) days prior written notice of same.

Claims or inquiries shall be addressed as follows:

Customer Service Department [Quality Control Manager]

KEENE BUILDING PRODUCTS, INC.

2926 Chester Avenue

Cleveland, OH 44114

P 440 605 1020 [877-514-5336]

F 440 605 1120

www.keenebuilding.com



P.O. Box 241353

Mayfield Heights, OH 44124

Info@KeeneBuilding.com

KeeneBuilding.com

877 | 514 | 5336

P 440 | 605 | 1020

F 440 | 605 | 1120

REPORT NUMBER: 100611624MID-001
ORIGINAL ISSUE DATE: February 28, 2012

EVALUATION CENTER
Intertek
8431 Murphy Drive
Middleton, WI 53562

RENDERED TO

KEENE BUILDING PRODUCTS
P.O. BOX 241353
MAYFIELD HEIGHTS, OH 44124
Contact: James Neary
Phone: 440-605-1020
Email: jfn@keenebuilding.com

PRODUCT EVALUATED: Driwall Rainscreen Product
EVALUATION PROPERTY: Drainage Efficiency

Report of Testing Exterior Insulation and Finish System with Driwall Rainscreen product in accordance with: ASTM E2273-03 (Reapproved 2011) "Standard Test Method for Determining the Drainage Efficiency of Exterior Insulation and Finish Systems (EIFS) Clad Wall Assemblies".

"This report is for the exclusive use of Intertek's Client and is provided pursuant to the agreement between Intertek and its Client. Intertek's responsibility and liability are limited to the terms and conditions of the agreement. Intertek assumes no liability to any party, other than to the Client in accordance with the agreement, for any loss, expense or damage occasioned by the use of this report. Only the Client is authorized to permit copying or distribution of this report and then only in its entirety. Any use of the Intertek name or one of its marks for the sale or advertisement of the tested material, product or service must first be approved in writing by Intertek. The observations and test results in this report are relevant only to the sample tested. This report by itself does not imply that the material, product, or service is or has ever been under an Intertek certification program."

1 Table of Contents

1	TABLE OF CONTENTS	2
2	INTRODUCTION	3
3	TEST SAMPLES.....	3
3.1.	SAMPLE SELECTION.....	3
3.2.	SAMPLE AND ASSEMBLY DESCRIPTION	3
4	TESTING AND EVALUATION METHODS.....	3
4.1.	TEST STANDARD 1.....	3
5	TESTING AND EVALUATION RESULTS	4
5.1.	RESULTS AND OBSERVATIONS.....	4
6	CONCLUSION	4

Revision Summary

DATE	SUMMARY
February 28, 2012	Original Report

2 Introduction

Intertek has conducted testing for Keene Building Products on a EIFS System with Driwall Rainscreen Product. Testing was conducted in accordance with ASTM E2273-03 (Reapproved 2011). This evaluation began February 27, 2012 and was completed February 27, 2012. Weight measurements were taken with a scale (WHI #1081).

3 Test Samples

3.1. SAMPLE SELECTION

Sample was not selected by an Intertek representative. Sample material was received at the Evaluation Center on January 20, 2012, and sample was constructed by a Keene Building Products representative, with the finish coat being applied on January 23, 2012.

3.2. SAMPLE AND ASSEMBLY DESCRIPTION

Overall size: 48" wide by 96" high by 6-1/8" thick
Framing: nominal 2" by 4" lumber spaced 16" o.c.
Sheathing: 1/2" CDX plywood fastened with 1-1/4" screws 12" o.c.
Weather resistive barrier
Driwall Rainscreen mesh fastened with capped staples
2" polystyrene foam insulation
Portland mortar base coat
Portland mortar finish coat

No drawings were supplied by the client.

4 Testing and Evaluation Methods

4.1. TEST STANDARD 1

ASTM E2273-03 (Reapproved 2011) Standard Test Method for Determining the Drainage Efficiency of Exterior Insulation and Finish Systems (EIFS) Clad Wall Assemblies

5 Testing and Evaluation Results

5.1. RESULTS AND OBSERVATIONS

Time (min)	Weight in (lbs)	Weight out (lbs)	% Drainage Efficiency
0	0	0	93%
15	3.55	2.85	
30	3.55	6.19	
45	3.55	9.56	
60	3.55	12.91	
75	3.55	16.30	
135	N/A	16.53	
Total	17.75	16.53	

Note: No water leakage was observed through the back of the test sample.
No water build up was observed in the spray box.

6 Conclusion

The sample described in this test report obtained a 93% Drainage Efficiency Rating when tested in accordance with ASTM E2273.

The conclusions of this test report may not be used as part of the requirements for Intertek product certification. Authority to Mark must be issued for a product to become certified.

INTERTEK

Reported by: 
Russ Burt
Senior Associate Engineer

Reviewed by: 
Rick Curkeet, P.E.
Chief Engineer

PHOTOS





Installation Instructions

Driwall™ Rainscreen in Masonry Applications

A Drainage and Ventilation Mat

Inspection of Wall Conditions and of Weather Barrier/Building Wrap

Ensure that the wall is free from structural defects, any membranes or flashing are properly installed, and the final system will have a path for moisture to escape from the wall. Keene Building Products Rainscreen should only be applied to structurally sound surfaces that incorporate good building practices and meet all local code requirements. Before starting any applications, check with your local building code requirements and read all manufacturers' installation instructions.

Product Selection

- For **Manufactured Stone and Thin Set Natural Stone** use **Driwall™ Rainscreen 10 mm**
- For **Stucco** use **Driwall™ Rainscreen 10 mm**
- For **Natural Stone** use ANY Driwall™ Rainscreen product
- For **Brick** use ANY Driwall™ Rainscreen product
- For **Siding, Shingles and Fiber-Cement Siding** use **Driwall™ Rainscreen 10 mm**

Installation Guide for Manufactured Stone and Thin Set Natural Stone

1. Install building paper or WRB* and flashing according to manufacturers' recommendations.
2. Place Driwall™ Rainscreen 10 mm horizontally against exterior wall, fabric side out. The entangled core should face the building interior. Starting at the bottom of the wall, position the first piece of Driwall™ Rainscreen 10 mm where the bottom edge of the stone will meet the Driwall™ Weep Screed.
3. Mechanically fasten with a nail, staple, and screw; one fastener for each square foot. When installing over concrete or block back-up walls that do not accept mechanical fasteners, hold in place with small dabs of glue every two feet. **DO NOT FASTEN THROUGH FLASHING.**
4. Seam adjacent Driwall™ Rainscreen 10mm piece with the selvage edge overlapping the top of the lower piece.
5. Trim Driwall™ Rainscreen 10 mm around all penetrations, windows and doors.
6. Install expanded metal lathe or code approved stucco wire* over the Driwall™ Rainscreen 10 mm according to the stone manufacturers' recommendations.
7. Apply scratch coat according to stone manufacturers' recommendations.
8. Install manufactured stone according to guidelines. Guidelines should include a weep method for ventilation and drainage.

** For BC, Canadian Stucco and Stone Installations see 10 mm Wire Technical Bulletin Installation Instructions*

Installation Guide for Stucco

1. Install building paper or WRB* and flashing according to manufacturers' recommendations.
2. Place Driwall™ Rainscreen 10 mm horizontally against exterior wall, fabric side out. The entangled core should face the building interior. Starting at the bottom of the wall, position the first piece of Driwall™ Rainscreen 10 mm where the bottom edge of the stucco will meet the Driwall™ Weep Screed.
3. Mechanically fasten with a nail, staple, and screw; one fastener for each square foot. When installing over concrete or block back-up walls that do not accept mechanical fasteners, hold in place with small dabs of glue every two feet. **DO NOT FASTEN THROUGH FLASHING.**
4. Seam adjacent Driwall™ Rainscreen 10 mm piece with the selvage edge overlapping the top of the lower piece.
5. Trim Driwall™ Rainscreen 10 mm around all penetrations, windows and doors.
6. Install expanded metal lathe or code approved stucco wire over the Driwall™ Rainscreen 10 mm according to the manufacturers' recommendations.
7. Apply stucco according to manufacturers' recommendations. Guidelines should include a weep method for ventilation and drainage.

** For BC, Canadian Stucco and Stone Installations see 10 mm Wire Technical Bulletin Installation Instructions*

Installation Guide for Natural Stone

1. Install building paper or WRB* and flashing according to manufacturers' recommendations.
2. Install only as much Driwall™ Rainscreen as will be covered by the stone each day.
3. Place Driwall™ Rainscreen horizontally against exterior wall, fabric side out. The entangled core should face the building interior. Starting at the bottom of the wall, position the first piece of Driwall™ Rainscreen where the bottom edge of the stone will meet the brick ledge.
4. Mechanically fasten with a nail, staple, and screw; one fastener for each square foot. When installing over concrete or block back-up walls that do not accept mechanical fasteners, hold in place with small dabs of glue every two feet. DO NOT FASTEN THROUGH FLASHING.
5. Seam adjacent Driwall™ Rainscreen piece with the selvage edge overlapping the top of the lower piece.
6. To create Weep Vents, use Driwall™ SS Weep Cut (4"x12" pre-cut strips), OR cut additional 4.0"(10-cm)-wide by 12.0"(30-cm)-long pieces of Driwall™ Rainscreen, and place strips vertically on top of flashing every 2-feet (60-cm) on center at the base of the wall extending outside of the wall as a weep vent. Place the strips fabric side OUT.
7. Install natural stone.
8. When wall is complete, cut vent strips back so that they are flush with the wall.

Installation Guide for Brick

1. Install building paper or WRB* and flashing according to manufacturers' recommendations.
2. Install only as much Driwall™ Rainscreen as will be covered by the brick each day.
3. Place Driwall™ Rainscreen horizontally against exterior wall, fabric side out. The entangled core should face the building interior. Starting at the bottom of the wall, position the first piece of Driwall™ Rainscreen where the bottom edge of the brick will meet the brick ledge.
4. Mechanically fasten with a nail, staple, and screw; one fastener for each square foot. When installing over concrete or block back-up walls that do not accept mechanical fasteners, hold in place with small dabs of glue every two feet. DO NOT FASTEN THROUGH FLASHING.
5. Seam adjacent Driwall™ Rainscreen piece with the selvage edge overlapping the top of the lower piece.
6. Install brick according to the Brick Institute or manufacturers' recommendations, leaving an open head joint every 2-feet (60-cm).
7. Use Keene Driwall™ Weep Vents to create the open head joint during construction.

Installation Guide for Siding, Shingles and Fiber-Cement Siding

1. Install building paper or WRB* and flashing according to manufacturers' recommendations.
2. Place Driwall™ Rainscreen 10 mm horizontally against exterior wall, fabric side out. The entangled core should face the building interior. Start at the bottom of the wall and work up.
3. Mechanically fasten with a nail, staple, and screw; one fastener for each square foot. When installing over concrete or block back-up walls that do not accept mechanical fasteners, hold in place with small dabs of construction adhesive every two square feet. DO NOT FASTEN THROUGH FLASHING.
4. Seam adjacent Driwall™ Rainscreen 10 mm piece with the selvage edge overlapping the top of the lower piece. Shingle so that selvage edge is installed toward the bottom of the wall.
5. Install siding, shingles and fiber-cement siding according to manufacturers' recommendations. When choosing fastener, allow for thickness of Driwall™ Rainscreen 10 mm. Pneumatic nail guns can be used if nails meet manufacturers' recommendations and air pressure and depth gauge is set to fasten nail snug with surface.

WRB = Weather Resistant Barrier*



P.O. Box 241353

Mayfield Heights, OH 44124

Info@KeeneBuilding.com

KeeneBuilding.com

877 | 514 | 5336

P 440 | 605 | 1020

F 440 | 605 | 1120

2/2

2016/1



25 YEAR LIMITED WARRANTY

KEENE BUILDING PRODUCTS, INC. DRIWALL RAINSCREEN

Keene Building Products, Inc. (“Keene”) warrants its DRIWALL RAINSCREEN products against defects in material and workmanship for a period of twenty-five (25) years from the date of installation. Upon receipt of written notice, which must be given no later than thirty (30) days after discovery of the defect, Keene, at its sole option, will repair or replace the defective item(s) or refund the purchase price. Keene, at its sole option, may request that the defective item(s) be returned to Keene’s principal offices for investigation and inspection. Keene is not required to repair or replace the defective item(s) or to refund the purchase price until it has received such item(s) that Keene has requested returned, and has inspected such item(s).

The warranty provided above is extended solely to the person or entity that purchases the product directly from Keene, and no third party may rely thereon or assert any claim based on such warranty. The foregoing warranty is the only warranty provided by Keene and is to the exclusion of any other warranty, whether express or implied, including the implied warranties of merchantability and fitness for a particular purpose, all of which are expressly disclaimed. Keene’s liability, if any, for damages based on any claim of any kind whatsoever, and regardless of the legal theory, with regard to any of its products, shall be limited to the actual purchase price of the product(s) with respect to which such claim is made.

UNDER NO CIRCUMSTANCES SHALL KEENE BE LIABLE TO PURCHASER FOR COMPENSATION, REIMBURSEMENT OR DAMAGES ON ACCOUNT OF THE LOSS OF PRESENT OR PROSPECTIVE PROFITS OR REVENUE, EXPENDITURES, INVESTMENTS OR COMMITMENTS, AND IN NO EVENT SHALL KEENE BE LIABLE TO PURCHASER OR ANY OTHER PERSON OR ENTITY FOR SPECIAL, INCIDENTAL, INDIRECT, CONSEQUENTIAL OR EXEMPLARY DAMAGES. By way of example only, Keene will not be responsible for any damages purchaser may incur that are related to surface, subsurface or building conditions, damage to the structure or contents of any building, or for costs of repair and replacement except as may be expressly provided in this Limited Warranty (and subject to the terms and conditions hereof).

Keene shall not be liable for product failure resulting from any of the following: (i) products not installed in accordance with Keene’s installation instructions; (ii) non-compliance with applicable building codes and regulations; (iii) the use of any of its products (A) in a manner for which it was not intended; (B) in a modified form without the permission of Keene, or (C) in combination with any other system, equipment or device not manufactured or sold by Keene.

Keene may change, modify, amend, replace or discontinue offering a product warranty, limited or otherwise. Any such change, modification, amendment, replacement or discontinuance shall be applicable to unsold products only, and Keene shall endeavor to give purchaser at least thirty (30) days prior written notice of same.

Claims or inquiries shall be addressed as follows:

Customer Service Department [Quality Control Manager]
KEENE BUILDING PRODUCTS, INC.
2926 Chester Avenue
Cleveland, OH 44114
P 440 605 1020 [877-514-5336]
F 440 605 1120
keenebuilding.com

SECTION 07 46 00

RAINSCREEN DRAINAGE MAT

PART 1 GENERAL

1.1 SECTION INCLUDES

- A. Wall moisture/vapor drainage mat.

1.2 RELATED SECTIONS

- A. Section 04 20 00 – Clay Unit Masonry: Cavity wall construction of brick veneer.
- B. Section 04 40 00 – Stone Masonry: Wall construction of stone veneer.
- C. Section 04 70 00 – Manufactured Masonry: Wall construction of manufactured masonry veneer.
- D. Section 07 46 00 – Siding: Wall construction of siding veneers.
- E. Section 09 24 23 – Portland Cement Stucco: Wall construction of stucco.

1.3 REFERENCES

- A. ASTM E 84 - Standard Test Method for Surface Burning Characteristics of Building Materials.
- B. ASTM E 2273 - Standard Test Method for Determining the Drainage Efficiency of Exterior Insulation and Finish Systems (EIFS) Clad Wall Assemblies.
- C. UL Fire Resistance Rated

***NOTE TO SPECIFIER** FOR UL RATED WALL ASSEMBLIES WITH DRIWALL
RAINSCREEN PLEASE SEE MANUFACTURER.

1.4 SUBMITTALS

- A. Submit under provisions of Section 01 33 00.
- B. Product Data: Manufacturer's data sheets on each product to be used, including:
 - 1. Preparation instructions and recommendations.
 - 2. Storage and handling requirements and recommendations.
 - 3. Installation methods.

1.5 QUALITY ASSURANCE

- A. Manufacturer Qualifications: Minimum 2 years production of similar products.
- B. Installer Qualifications: Experience with installation of similar products.

1.6 DELIVERY, STORAGE, AND HANDLING

- A. Store products in manufacturer's unopened packaging until ready for installation.

PART 2 PRODUCTS

2.1 MANUFACTURERS

- A. Acceptable Manufacturer: Keene Building Products; PO Box 241353, Mayfield Heights, Ohio 44124. Toll Free Tel: (877) 514-5336, Tel: (440) 605-1020. Fax: (440) 605-1120. Email: info@keeneBuilding.com. Web: http://www.KeeneBuilding.com.
- B. Substitutions: Not permitted.
- C. Requests for substitutions will be considered in accordance with provisions of Section 01 25 00.

2.2 DRAINAGE MAT

**** NOTE TO SPECIFIER **** DRIWALL RAINSCREEN 10MM IS A NOMINAL 0.40 INCH (10MM) THICK, RANDOMLY ORIENTED GEOMETRIC PATTERNED DRAINAGE AND VENTILATION MAT. IT IS DESIGNED TO ELIMINATE MOISTURE AND MOISTURE VAPOR IN STUCCO, THIN STONE, MANUFACTURED STONE, SIDING AND BRICK OR STONE MASONRY APPLICATIONS. DRIWALL RAINSCREEN IS PRODUCED FROM AN EXTRUDED POLYMER MATRIX OF ENTANGLED MONOFILAMENTS. THE THREE-DIMENSIONAL MAT IS HEAT LAMINATED TO A NON-WOVEN LIGHTWEIGHT, BREATHABLE FABRIC TO PROVIDE A SEPARATION FROM CEMENTATIONS VENEERS. THE MONOFILAMENTS ARE HEAT WELDED AT THE JUNCTIONS TO FORM A RESILIENT STRUCTURE THAT SPACES THE VENEER AWAY FROM THE INNER SHEATHING. THE PRODUCT IS USEFUL IN CAVITY WALL DESIGNS AND RAINSCREEN SYSTEMS WHERE AN AIR SPACE IS NEEDED FOR DRAINAGE AND VENTILATION. WHEN DRIWALL RAINSCREEN IS USED, NO MORTAR OR OTHER DEBRIS CAN ENTER THE CAVITY ASSURING PROPER DRAINAGE AND VENTILATION.

- A. Drainage Mat: Randomly oriented geometric patterned drainage and ventilation mat designed to eliminate moisture and moisture vapor in wall applications.

**** NOTE TO SPECIFIER **** PRODUCT SELECTION:

- FOR MANUFACTURED STONE USE DRIWALL RAINSCREEN 10mm
- FOR THIN SET NATURAL STONE USE DRIWALL RAINSCREEN 10mm
- FOR STUCCO USE DRIWALL RAINSCREEN 10mm
- FOR SIDING USE DRIWALL RAINSCREEN 10mm
- FOR NATURAL STONE USE ANY DRIWALL RAINSCREEN PRODUCT
- FOR BRICK USE ANY DRIWALL RAINSCREEN PRODUCT

- B. Product: Driwall Rainscreen 10mm as manufactured by Keene Building Products.

1. Physical Characteristics: Three-dimensional mat heat laminated to a non-woven lightweight, vapor permeable fabric. The monofilament mat is heat welded at the junctions to form a resilient structure that isolates veneer from the back-up.
 - a. 0.40 inches (10 mm) thick.
 - b. 18.9 oz/sq. yd. (641 g/sq m) total weight.
 - c. 48 inches (122 cm) wide.
 - d. 45 feet (13.7 m) roll length.
2. Performance:
 - a. Drainage of moisture and ventilation between veneer and back-up support.
3. Material: UV stabilized polypropylene.
 - a. Class A flame spread per ASTM E84.
 - b. ASTM ASTM E 2273 - Standard Test Method for Determining the Drainage Efficiency of Exterior Insulation and Finish Systems (EIFS) Clad Wall Assemblies.
 - c. Hydrophobic compound.
 - d. Resistant to chemicals.
 - e. Does not support mold growth.

**** NOTE TO SPECIFIER **** DELETE APPLICATIONS NOT REQUIRED FOR PROJECT.

- C. Application:
 1. Provide at manufactured stone veneer and as indicated or required.
 2. Provide at thin set natural stone veneer and as indicated or required.

3. Provide at stucco veneer and as indicated or required.
4. Provide at natural stone veneer as indicated or required.
5. Provide at brick veneer and as indicated or required.
6. Provide at siding and as indicated or required.

PART 3 EXECUTION

3.1 EXAMINATION

- A. Do not begin installation until substrates have been properly prepared.
- B. If substrate preparation is the responsibility of another installer, notify Architect of unsatisfactory preparation before proceeding.

3.2 PREPARATION

- A. Clean surfaces thoroughly prior to installation.
- B. Prepare surfaces using the methods recommended by the manufacturer for achieving the best result for the substrate under the project conditions.

3.3 DRAINAGE MAT INSTALLATION

- A. Install in accordance with manufacturer's instructions.
- B. Inspection of Wall Conditions and Weather Barrier/Building Wrap: Ensure that the wall is free from structural defects, that any membranes or flashing are properly installed and that the final system will have a path for moisture to escape from the wall.

** NOTE TO SPECIFIER ** DELETE APPLICATIONS NOT REQUIRED FOR PROJECT.

- C. Installation for Manufactured Stone and Thin Set Natural Stone:
 1. Install building paper or house wrap and flashing to manufactures' recommendations.
 2. Place drainage mat horizontally against exterior wall fabric side out, entangled core to the building interior. Starting at the bottom of the wall, position the first piece of drainage mat where the bottom edge of the stone will meet the ledger board.
 3. Mechanically fasten with a staple hammer, large head nail or washer and screw one fastener for each square foot (0.1 sq. m). When installing over concrete or block back-up walls that do not accept mechanical fasteners hold in place with small dabs of glue every 2.0 feet (0.61 m). Do not fasten through flashing.
 4. Seam adjacent piece with the selvage edge overlapping the top of the lower drainage mat piece.
 5. Install expanded metal lathe over the drainage mat according to the stone manufacturer's recommendations.
 6. Apply scratch coat according to stone manufacturer's recommendations.
 7. Install manufactured stone according to guidelines. Provide a weep method for ventilation and drainage mat.
 8. Trim drainage mat around all penetrations, windows and doors so that the material is flush to the flashing.
- D. Installation for Stucco:
 1. Install building paper or house wrap and flashing to manufactures' recommendations.
 2. Place drainage mat horizontally against exterior wall fabric side out, entangled core to the building interior. Starting at the bottom of the wall, position the first piece of drainage mat where the bottom edge of the stone will meet the ledger board.
 3. Mechanically fasten with a staple hammer, large head nail or washer and screw one fastener for each square foot (0.1 sq. m). When installing over concrete or block back-up walls that do not accept mechanical fasteners hold in place with small dabs of glue every 2.0 feet (0.61 m). Do not fasten through flashing.

4. Seam adjacent piece with the selvage edge overlapping the top of the lower drainage mat piece.
5. Install expanded metal lathe over the drainage mat according to the manufacturer's recommendations.
6. Apply stucco according to manufacturer's recommendations. Provide a weep method for ventilation and drainage.
7. Trim drainage mat around all penetrations, windows and doors so that the material is flush to the flashing.

E. Installation for Natural Stone:

1. Install building paper or house wrap and flashing to manufactures' recommendations.
2. Install only as much drainage mat as will be covered by the stone each day. Wall ties can be installed through the drainage mat material.
3. Place drainage mat horizontally against exterior wall fabric side out, entangled core to the building interior. Starting at the bottom of the wall, position the first piece of drainage mat where the bottom edge of the stone will meet the ledger board.
4. Mechanically fasten with a staple hammer, large head nail or washer and screw one fastener for each square foot (0.1 sq. m). When installing over concrete or block back-up walls that do not accept mechanical fasteners hold in place with small dabs of glue every 2.0 feet (0.61 m). Do not fasten through flashing.
5. Seam adjacent piece with the selvage edge overlapping the top of the lower drainage mat piece.
6. Cut additional 2 inches (51 mm) wide by 12 inches length (305 mm) pieces of drainage mat and place strips every 2.0 feet (0.61 m) on center at the base of the wall extending outside of the wall as a weep vent. Place the strips fabric side UP.
7. Install stone.
8. When wall is complete, cut vent strips back flush with wall.

F. Installation for Brick:

1. Install building paper or house wrap and flashing to manufactures' recommendations.
2. Install only as much drainage mat as will be covered by the brick each day. Wall ties can be installed through the drainage mat material.
3. Place drainage mat horizontally against exterior wall fabric side out, entangled core to the building interior. Starting at the bottom of the wall, position the first piece of drainage mat where the bottom edge of the brick will meet the ledger board.
4. Mechanically fasten with a staple hammer, large head nail or washer and screw one fastener for each square foot (0.1 sq. m). When installing over concrete or block back-up walls that do not accept mechanical fasteners hold in place with small dabs of glue every 2.0 feet (0.61 m). Do not fasten through flashing.
5. Seam adjacent piece with the selvage edge overlapping the top of the lower drainage mat piece.
6. Install brick according to Brick Institute of America or manufacturer recommendation leaving an open head joint every 2.0 feet (0.61 m).
7. Provide vents to provide open head joints during construction.

G. Installation for Siding:

1. Install building paper or house wrap and flashing to manufacturers' recommendations.
2. Place drainage mat horizontally against exterior wall, fabric side out, entangled core to the building interior. Start at the bottom of the wall and work up.
3. Mechanically fasten with a staple hammer, large head nail or washer and screw one fastener for each square foot (0.1 sq. m). When installing over concrete or block back-up walls that do not accept mechanical fasteners hold in place with small dabs of glue every 2.0 feet (0.61 m). Do not fasten through flashing.
4. Seam adjacent piece with the selvage edge overlapping the top of the lower drainage mat piece. Shingle so that selvage edge is installed toward the bottom of the wall.
5. Install siding, shingle or fiber-cement siding according to manufacturers' recommendations. When choosing a fastener, allow for thickness of drainage mat. Pneumatic nail guns can be used if nails meet manufacturers' recommendations and air pressure and depth gauge is set to fasten nail snug with surface.

END OF SECTION



LEED v4 - There are changes on how KEENE products contribute toward points for LEED project certification.



How Keene can Help You Achieve LEED® Credits



LEED®, or Leadership in Energy & Environmental Design, is a green building certification program that provides a national rating system for developing sustainable building designs and construction.

LEED®, or Leadership in Energy & Environmental Design, is a green building certification program that provides a national rating system for developing sustainable building designs and construction.

LEED v4 BD+C (Building Design + Construction)

MR Credit 3: 1-2 points (Material & Resources) Building Product Disclosure and Optimization - Sourcing of Raw Materials

Locally sourced materials and recycled content are now combined in 2 options:

1. Raw Material Source and Extraction Reporting (1 point)
2. Leadership Extraction Practices (1 point)

Comparison Chart

Material & Resources - Prerequisites & Credits in LEED 2009 & LEED v4

LEED 2009 New Construction & Major Renovations			LEED v4 BD+C: Building Design + Construction		
MRp1	Storage & collection of recyclables	Required	Prereq	Storage & collection of recyclables	Required
MRc1.1	Building reuse - maintain existing walls, floors and roof	Up to 3 points	Prereq	Construction & demolition waste management planning	Required
MRc1.2	Building reuse - maintain interior nonstructural elements	1 point	Credit	Building life-cycle impact reduction	Up to 2 points
MRc2	Construction waste management	Up to 2 points	Credit	Building product disclosure & optimization - environmental product declarations*	Up to 2 points
MRc3	Materials reuse	Up to 2 points	Credit	Building product disclosure & optimization - sourcing of raw materials	Up to 2 points
MRc4	Recycled content	Up to 2 points	Credit	Building product disclosure & optimization - material ingredients	Up to 2 points
MRc5	Regional materials	Up to 2 points	Credit	Building life-cycle impact reduction recyclables	Up to 2 points
MRc6	Rapidly renewable materials	1 point	*If products meeting criteria for this credit are also locally sourced (extracted, manufactured, and purchased within 100 miles of the project site) they are valued at 200% of actual cost for purposes of credit calculation.		
MRc7	Certified wood	1 point			

Source: USGBC, LEED credit library: <http://www.usgbc.org/credits/new-construction/v4/material-%26-resources>

MR Credit 3:
(Material & Resources)
Recycled Content



Product	Thickness	Recycled Content	Pre-Consumer Content	Post-Consumer Content
Quiet Qurl®	0.13 in. / 3.0 mm	up to 40%	35%	5%
	0.25 in. / 6.0 mm	up to 40%	35%	5%
	0.40 in. / 10.0 mm	up to 40%	35%	5%
	0.75 in. / 19.0 mm	up to 40%	35%	5%
QQ Step Soft™	1.0 mm – 15.0 mm	up to 90%	–	90%
Driwall™	0.13 in. / 3.8 mm	up to 40%	40%	–
	0.25 in. / 6.0 mm	up to 40%	40%	–
	0.40 in. / 10.9 mm	up to 40%	40%	–
	0.75 in. / 19.0 mm	up to 40%	40%	–

Manufactured in Euclid, Ohio.

EQ Credit 9: 1-2 points
(Indoor Environmental Quality)
Acoustic Performance

Acoustic Performance has its own credit that requires a specific STC value based upon what type of room is being built, or your local building code, whichever is more stringent.

Please refer to this chart for the list of Sound Transmission Class (STC) ratings for adjacent spaces.

Maximum Composite Sound Transmission Class Ratings for Adjacent Spaces

Adjacency Combinations		STC
Residence (within a multifamily residence) hotel or motel room	Residence, hotel or motel room	55
Residence, hotel or motel room	Common hallway, stairway	50
Residence, hotel or motel room	Retail	60
Retail	Retail	50
Standard office	Standard office	45
Executive office	Executive office	50
Conference room	Conference room	50
Office, conference room	Hallway, stairway	50
Mechanical equipment room	Occupied area	60



P.O. Box 241353

Mayfield Heights, OH 44124

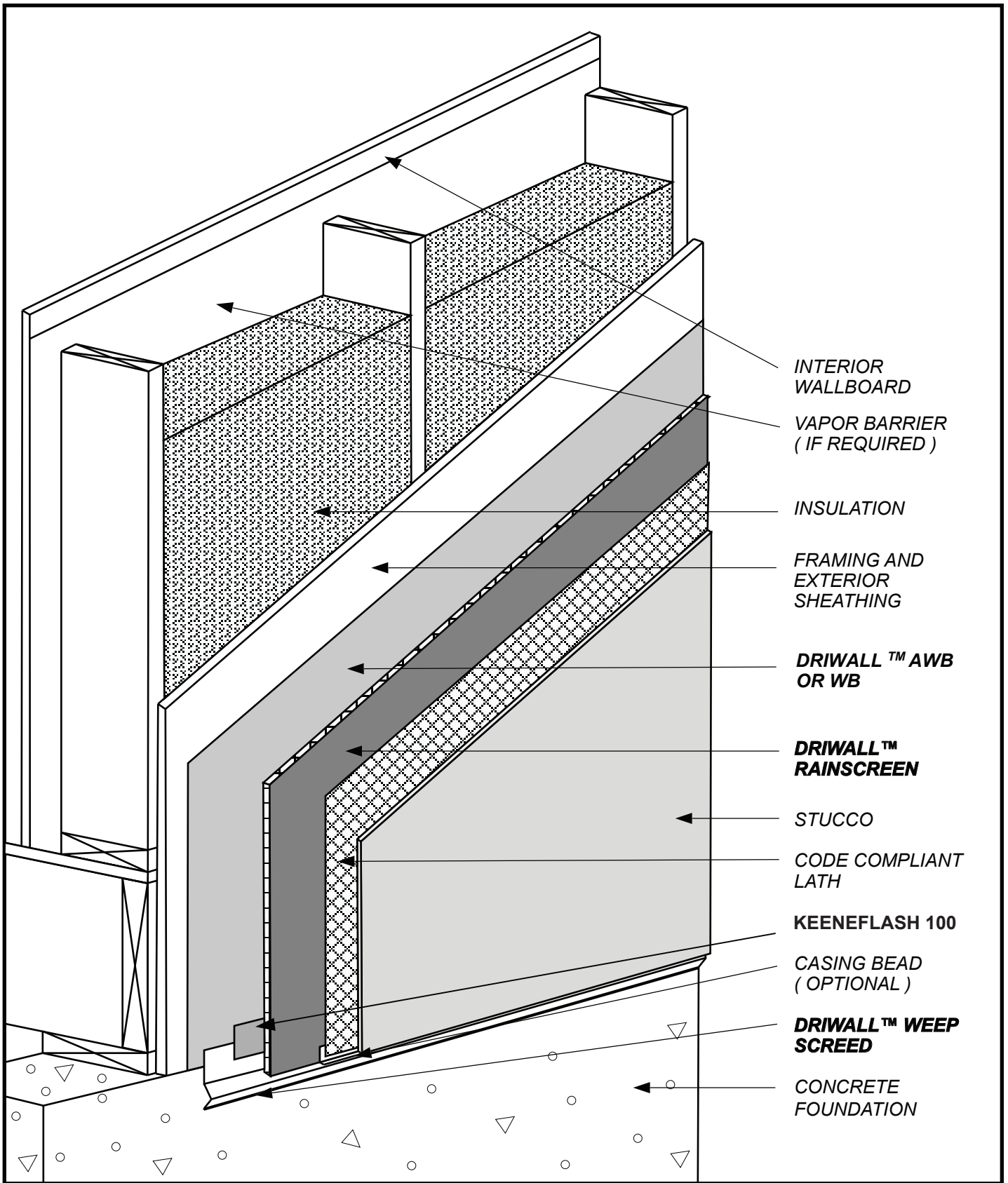
Info@KeeneBuilding.com

KeeneBuilding.com

877 | 514 | 5336

P 440 | 605 | 1020

F 440 | 605 | 1120



INTERIOR WALLBOARD

VAPOR BARRIER (IF REQUIRED)

INSULATION

FRAMING AND EXTERIOR SHEATHING

DRIWALL™ AWB OR WB

DRIWALL™ RAINSCREEN

STUCCO

CODE COMPLIANT LATH

KEENEFLASH 100

CASING BEAD (OPTIONAL)

DRIWALL™ WEEP SCREED

CONCRETE FOUNDATION

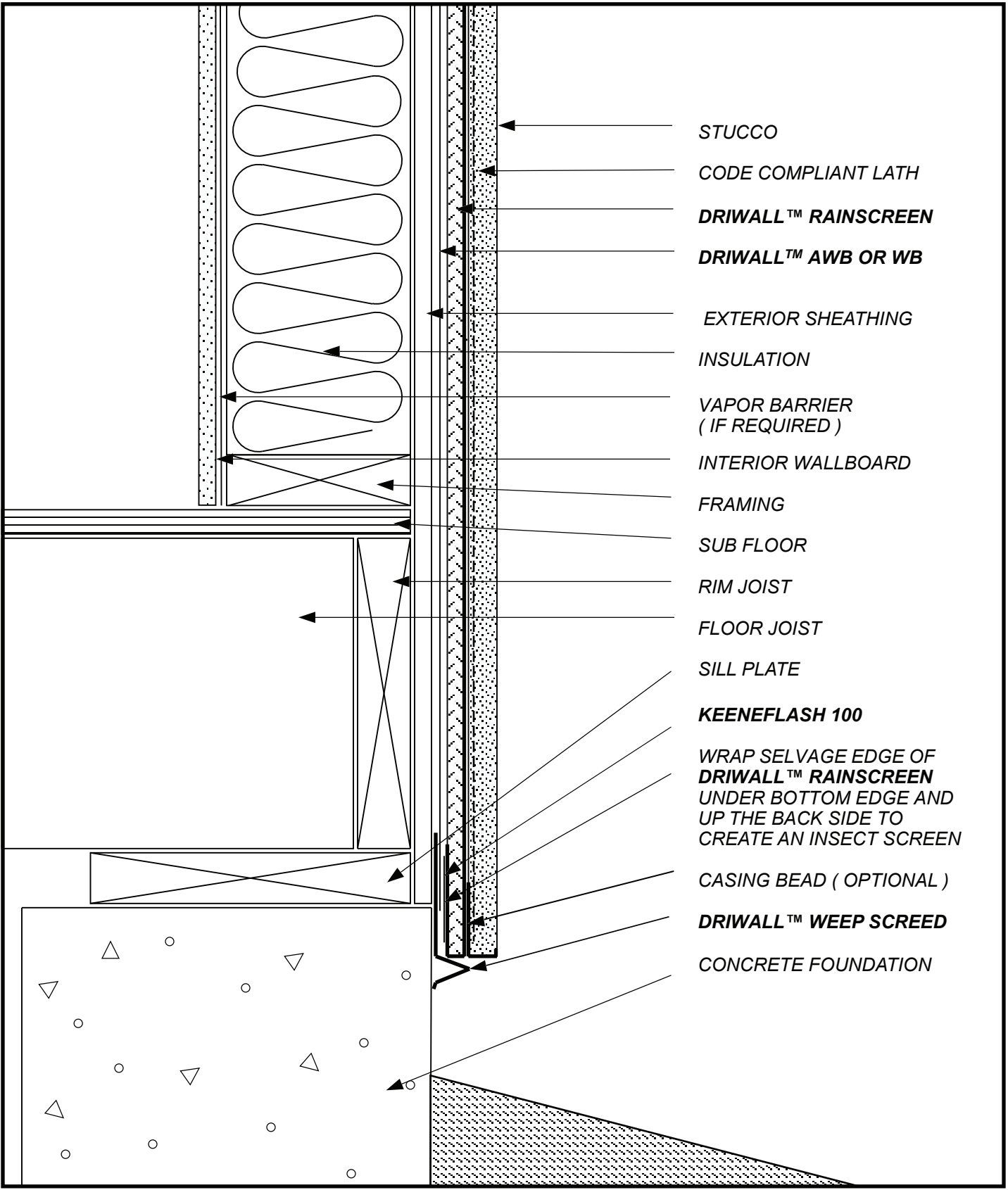
SKETCH NO: **SV-1**

DATE: **09/12/19**

SKETCH:

STUCCO VENEER

Keene Building Products
 P.O. Box 241353 Cleveland, OH 44124
 P (877) 514-5336 F (440) 605-1120
 www.keenebuilding.com



- STUCCO
- CODE COMPLIANT LATH
- DRIWALL™ RAINSCREEN**
- DRIWALL™ AWB OR WB**
- EXTERIOR SHEATHING
- INSULATION
- VAPOR BARRIER
(IF REQUIRED)
- INTERIOR WALLBOARD
- FRAMING
- SUB FLOOR
- RIM JOIST
- FLOOR JOIST
- SILL PLATE
- KEENEFLASH 100**
- WRAP SELVAGE EDGE OF
DRIWALL™ RAINSCREEN
UNDER BOTTOM EDGE AND
UP THE BACK SIDE TO
CREATE AN INSECT SCREEN
- CASING BEAD (OPTIONAL)
- DRIWALL™ WEEP SCREED**
- CONCRETE FOUNDATION

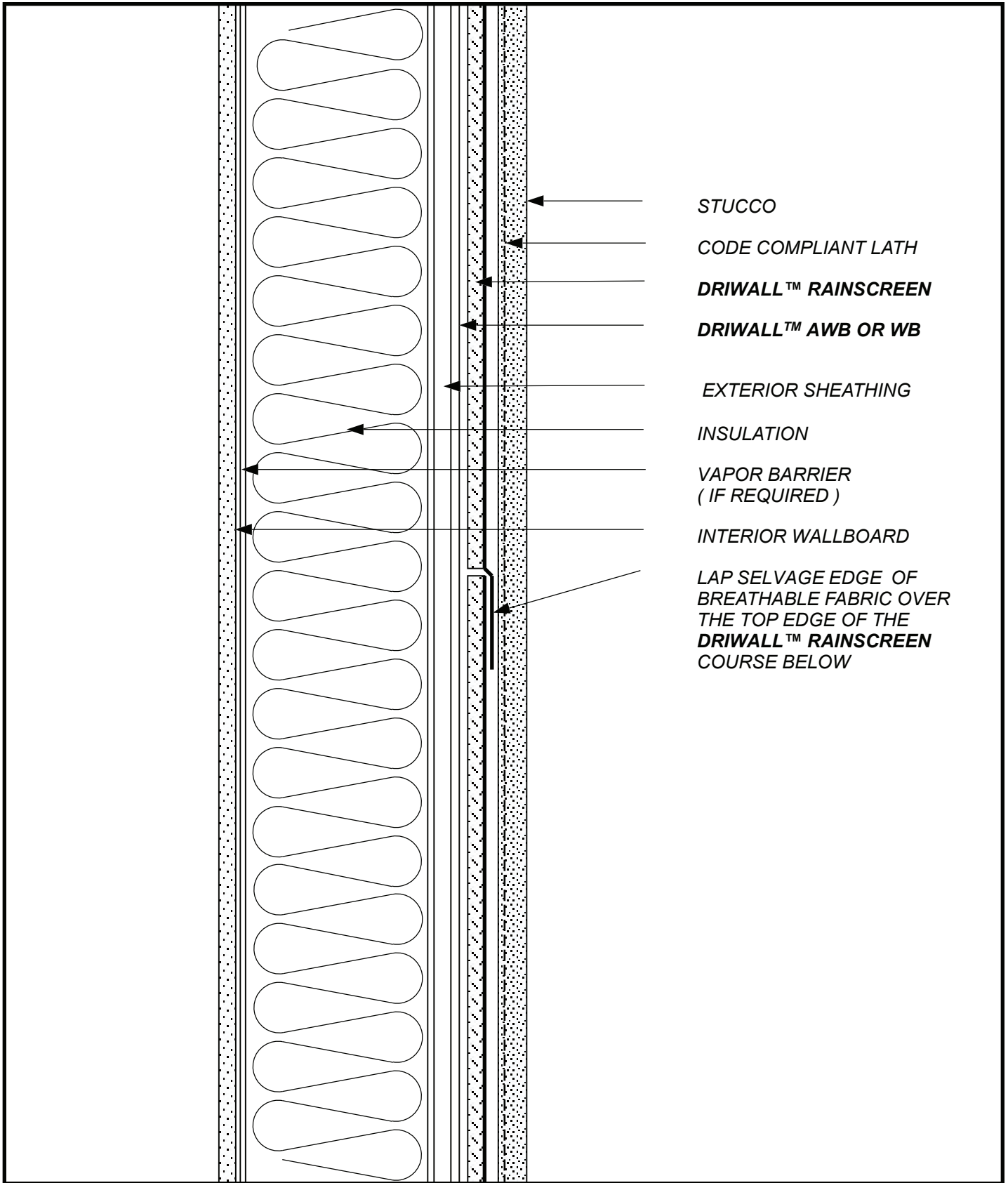
SKETCH NO: **SV-2**

DATE: **09/12/19**

SKETCH:
**STUCCO VENEER
WALL BASE**



Keene Building Products
P.O. Box 241353 Cleveland, OH 44124
P (877) 514-5336 F (440) 605-1120
www.keenebuilding.com



STUCCO

CODE COMPLIANT LATH

DRIWALL™ RAINSCREEN

DRIWALL™ AWB OR WB

EXTERIOR SHEATHING

INSULATION

VAPOR BARRIER
(IF REQUIRED)

INTERIOR WALLBOARD

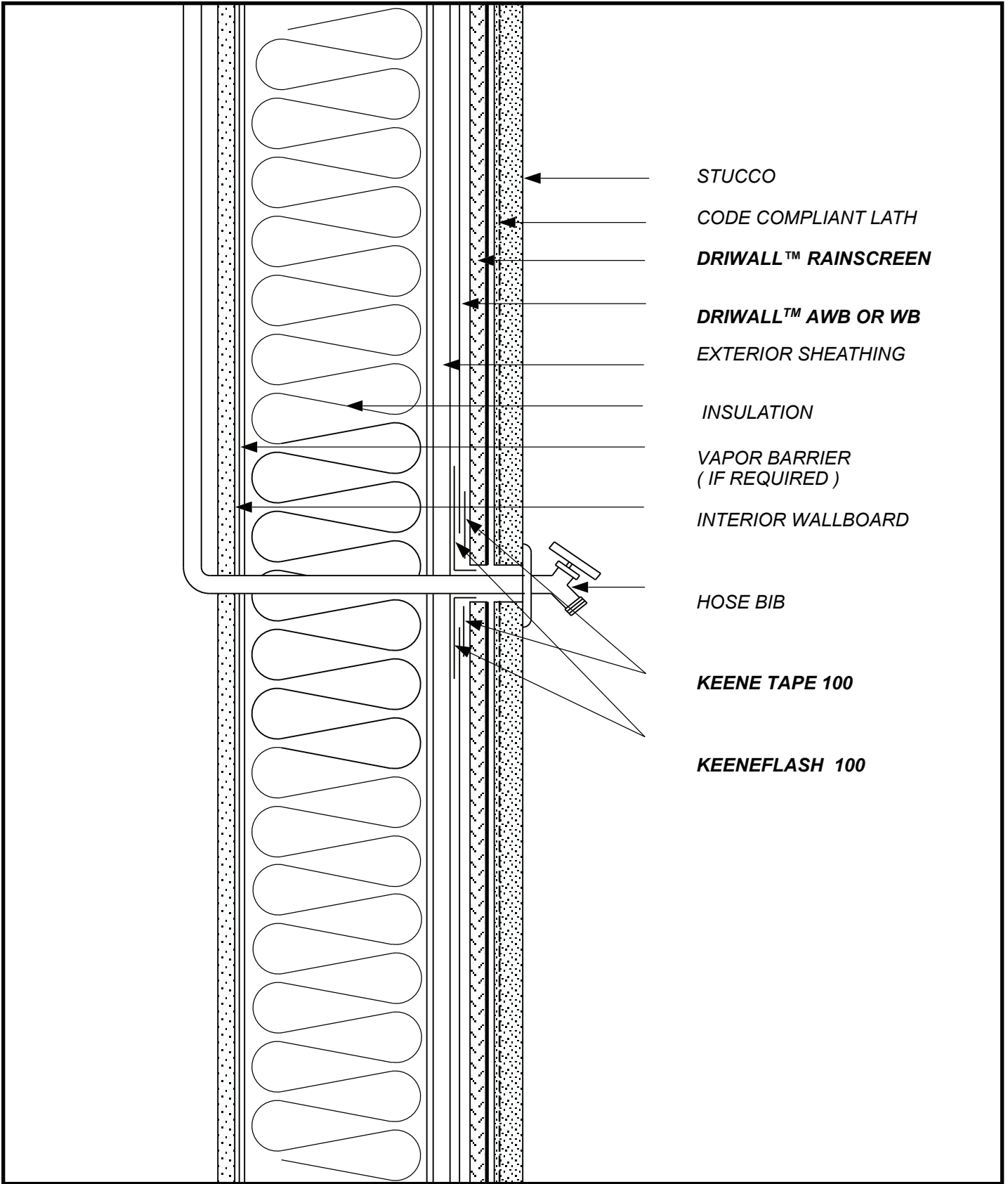
LAP SELVAGE EDGE OF
BREATHABLE FABRIC OVER
THE TOP EDGE OF THE
DRIWALL™ RAINSCREEN
COURSE BELOW

SKETCH NO: SV-3

DATE: 09/12/19

SKETCH:
STUCCO VENEER
DRIWALL™ RAINSCREEN LAP

keene Building Products
 P.O. Box 241353 Cleveland, OH 44124
 P (877) 514-5336 F (440) 605-1120
 www.keenebuilding.com



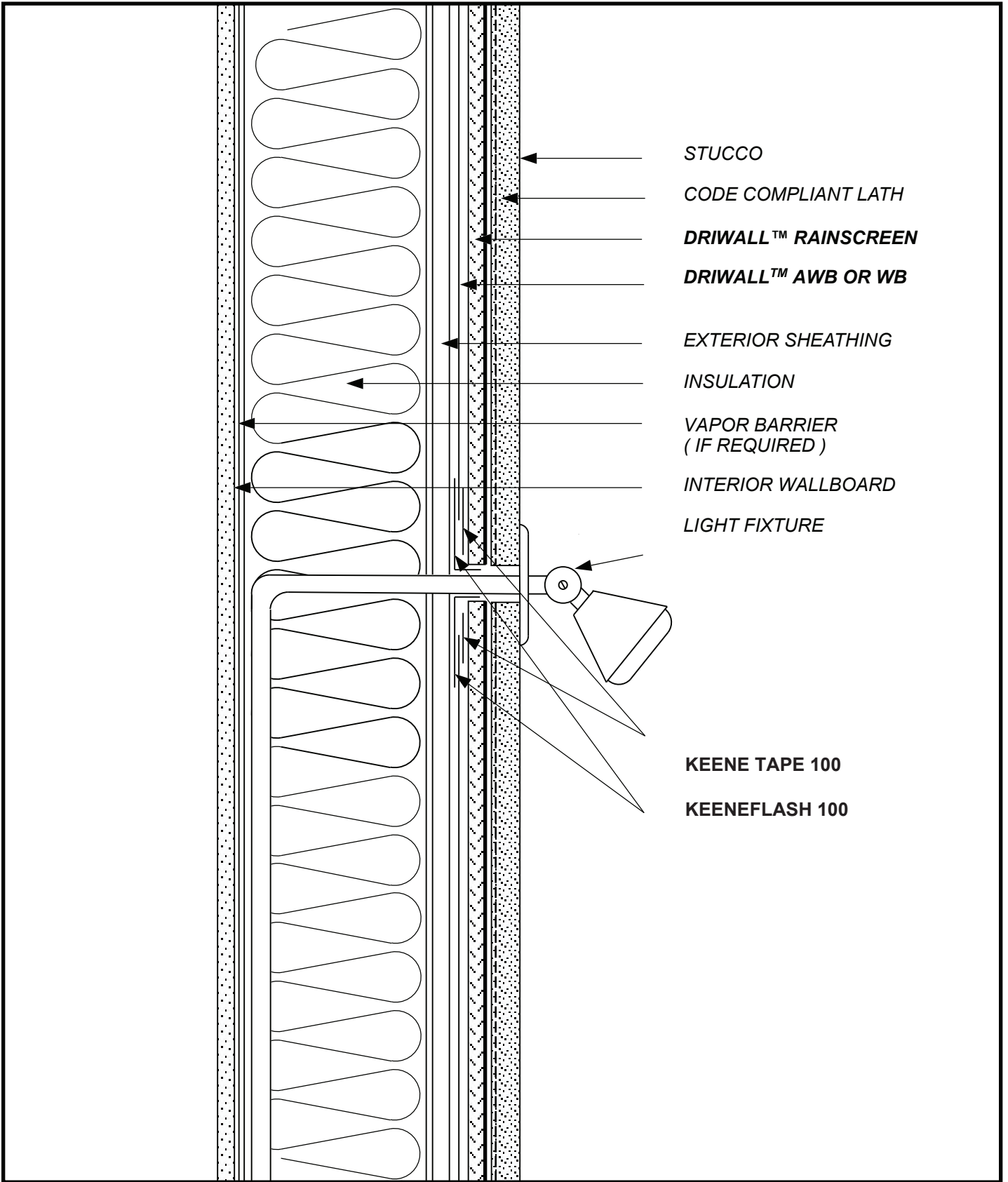
- STUCCO
- CODE COMPLIANT LATH
- DRIWALL™ RAINSCREEN**
- DRIWALL™ AWB OR WB**
- EXTERIOR SHEATHING
- INSULATION
- VAPOR BARRIER
(IF REQUIRED)
- INTERIOR WALLBOARD
- HOSE BIB
- KEENE TAPE 100**
- KEENEFLASH 100**

SKETCH NO: **SV-4**

DATE: **09/12/19**

SKETCH:
**STUCCO VENEER
 HOSE BIB PENETRATION**

keene Building Products
 P.O. Box 241353 Cleveland, OH 44124
 P (877) 514-5336 F (440) 605-1120
 www.keenebuilding.com

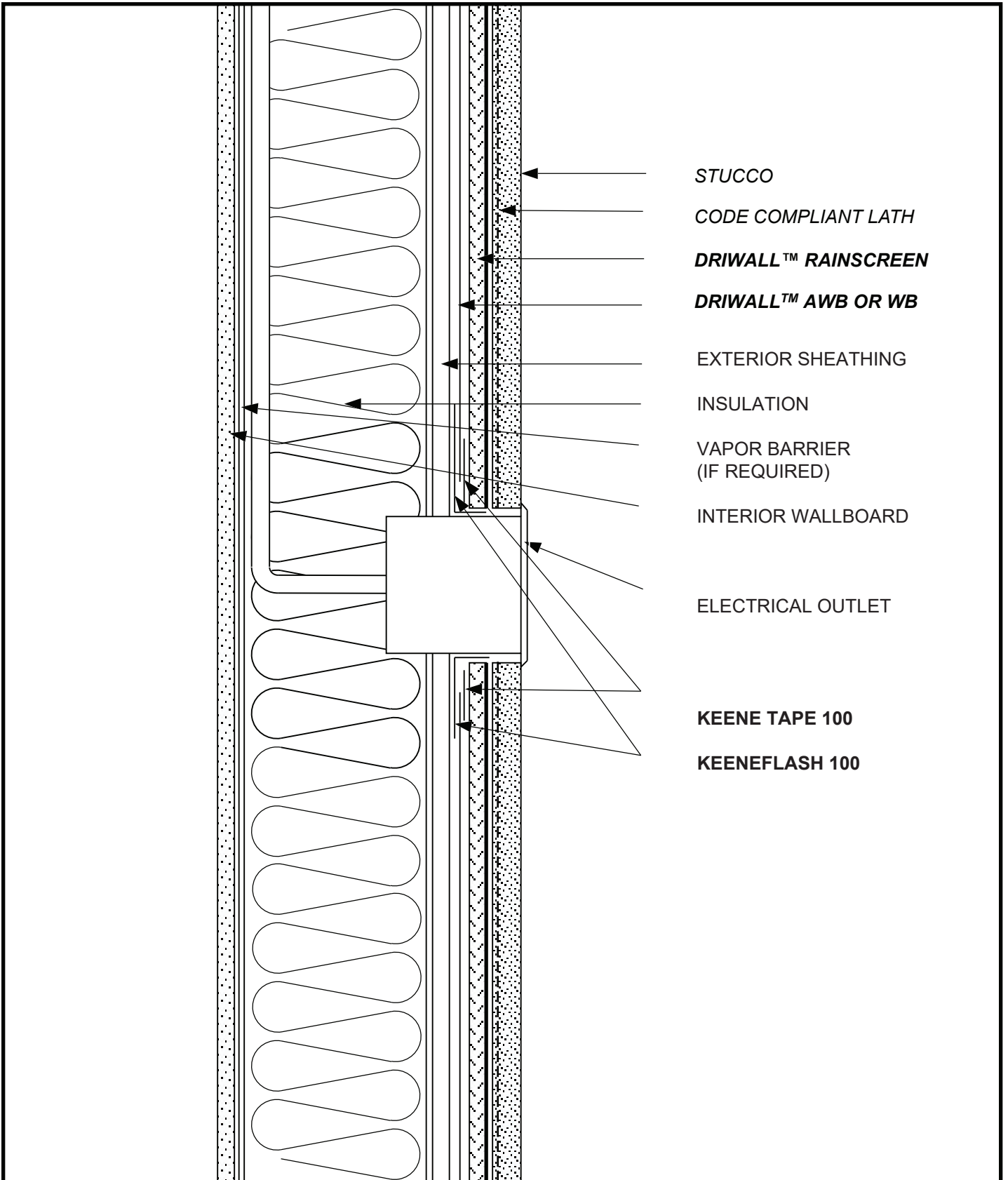


SKETCH NO: SV-5

DATE: 09/12/19

SKETCH:
**STUCCO VENEER
 LIGHT FIXTURE PENETRATION**

Keene Building Products
 P.O. Box 241353 Cleveland, OH 44124
 P (877) 514-5336 F (440) 605-1120
 www.keenebuilding.com



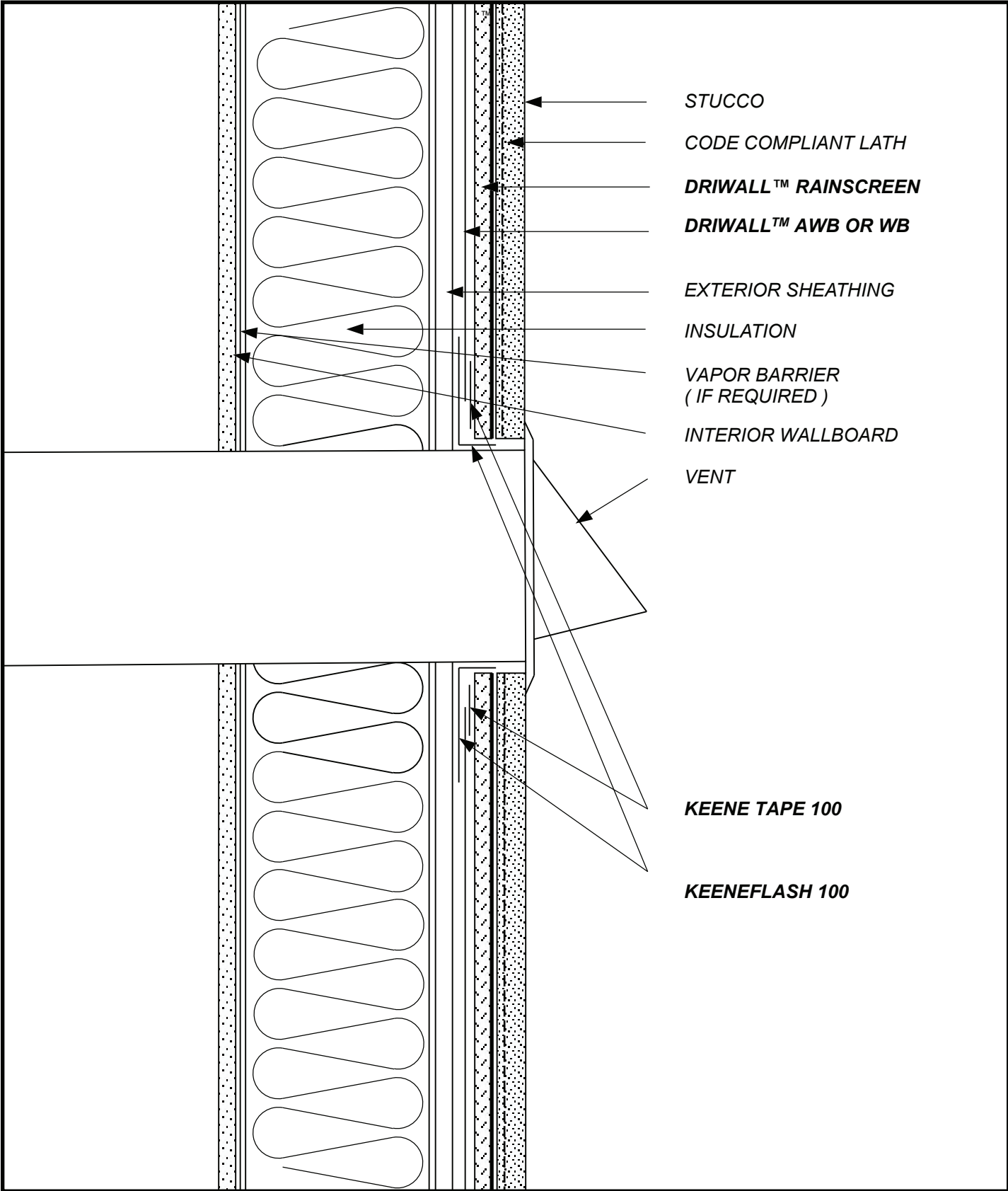
- STUCCO
- CODE COMPLIANT LATH
- DRIWALL™ RAINSCREEN**
- DRIWALL™ AWB OR WB**
- EXTERIOR SHEATHING
- INSULATION
- VAPOR BARRIER (IF REQUIRED)
- INTERIOR WALLBOARD
- ELECTRICAL OUTLET
- KEENE TAPE 100**
- KEENEFLASH 100**

SKETCH NO: **SV-6**

DATE: **09/12/19**

SKETCH:
**STUCCO VENEER
 ELECTRIC BOX PENETRATION**

Keene Building Products
 P.O. Box 241353 Cleveland, OH 44124
 P (877) 514-5336 F (440) 605-1120
 www.keenebuilding.com



STUCCO
 CODE COMPLIANT LATH
DRIWALL™ RAINSCREEN
DRIWALL™ AWB OR WB
 EXTERIOR SHEATHING
 INSULATION
 VAPOR BARRIER
 (IF REQUIRED)
 INTERIOR WALLBOARD
 VENT

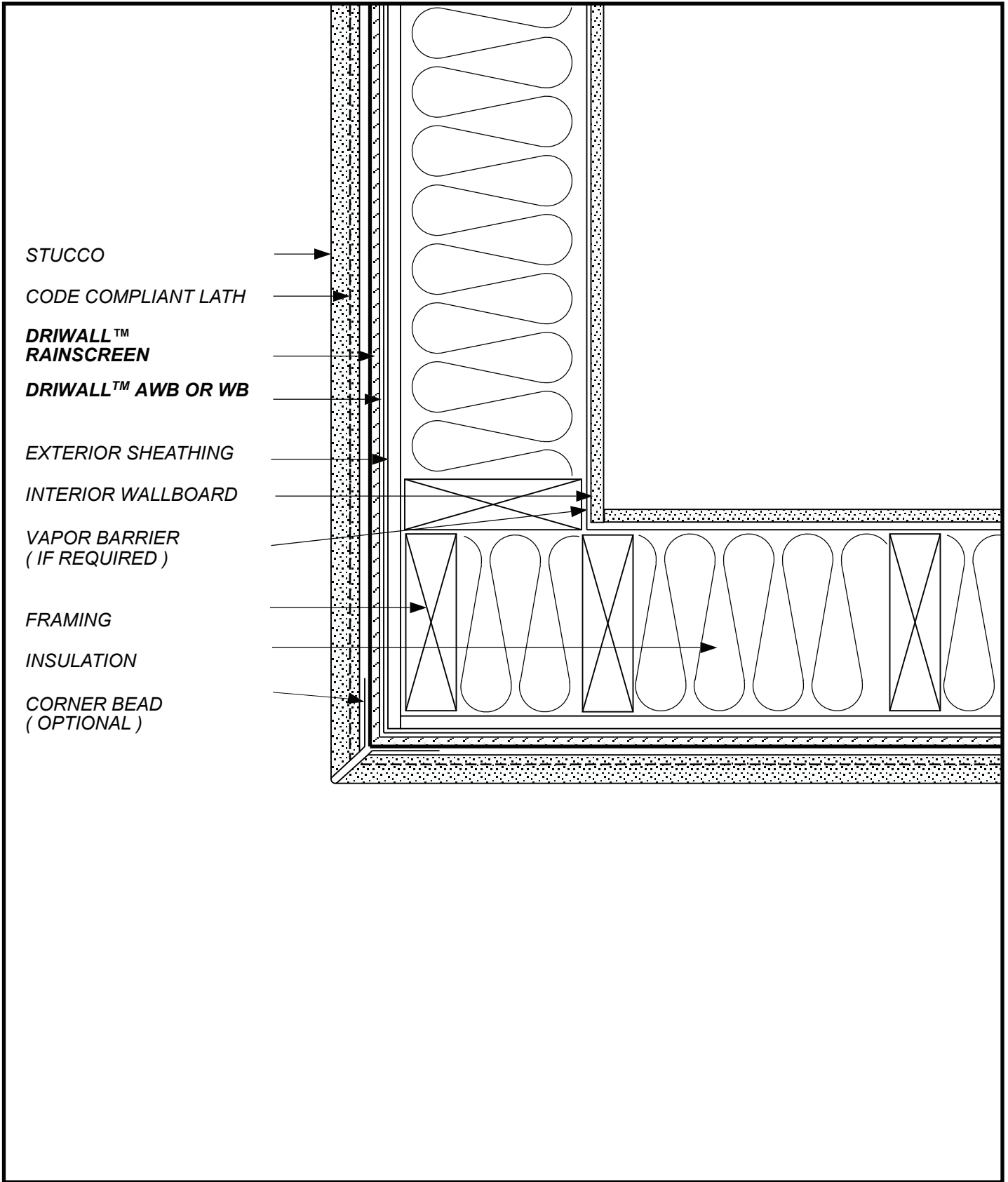
KEENE TAPE 100

KEENEFLASH 100

SKETCH NO: **SV-7**
 DATE: **1/1/11**

SKETCH:
STUCCO VENEER
VENT PENETRATION


Keene Building Products
 P.O. Box 241353 Cleveland, OH 44124
 P (877) 514-5336 F (440) 605-1120
www.keenebuilding.com

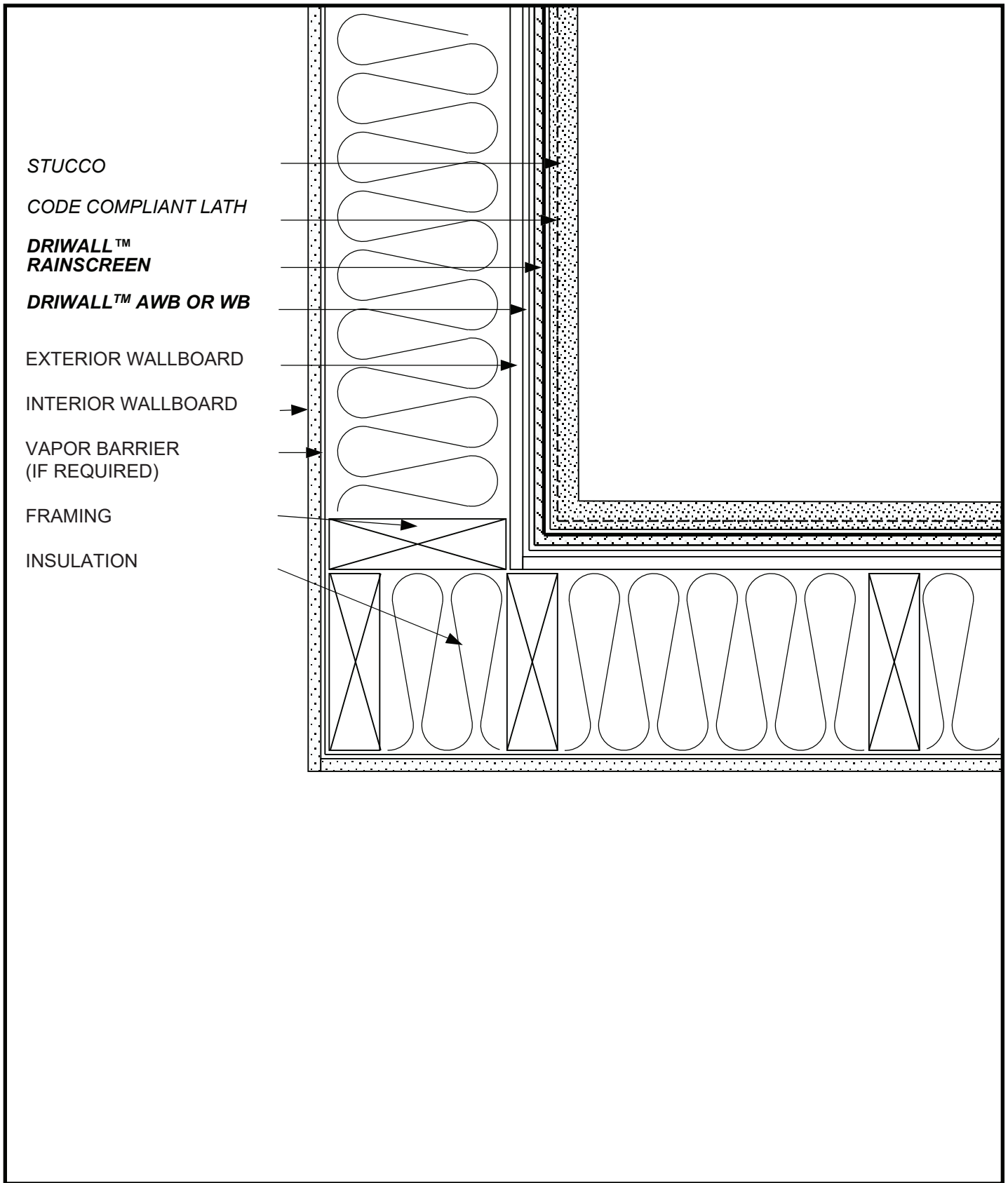


SKETCH NO: **SV-8**

DATE: **09/12/19**

SKETCH:
**STUCCO VENEER
 EXTERNAL CORNER**

Keene Building Products
 P.O. Box 241353 Cleveland, OH 44124
 P (877) 514-5336 F (440) 605-1120
 www.keenebuilding.com

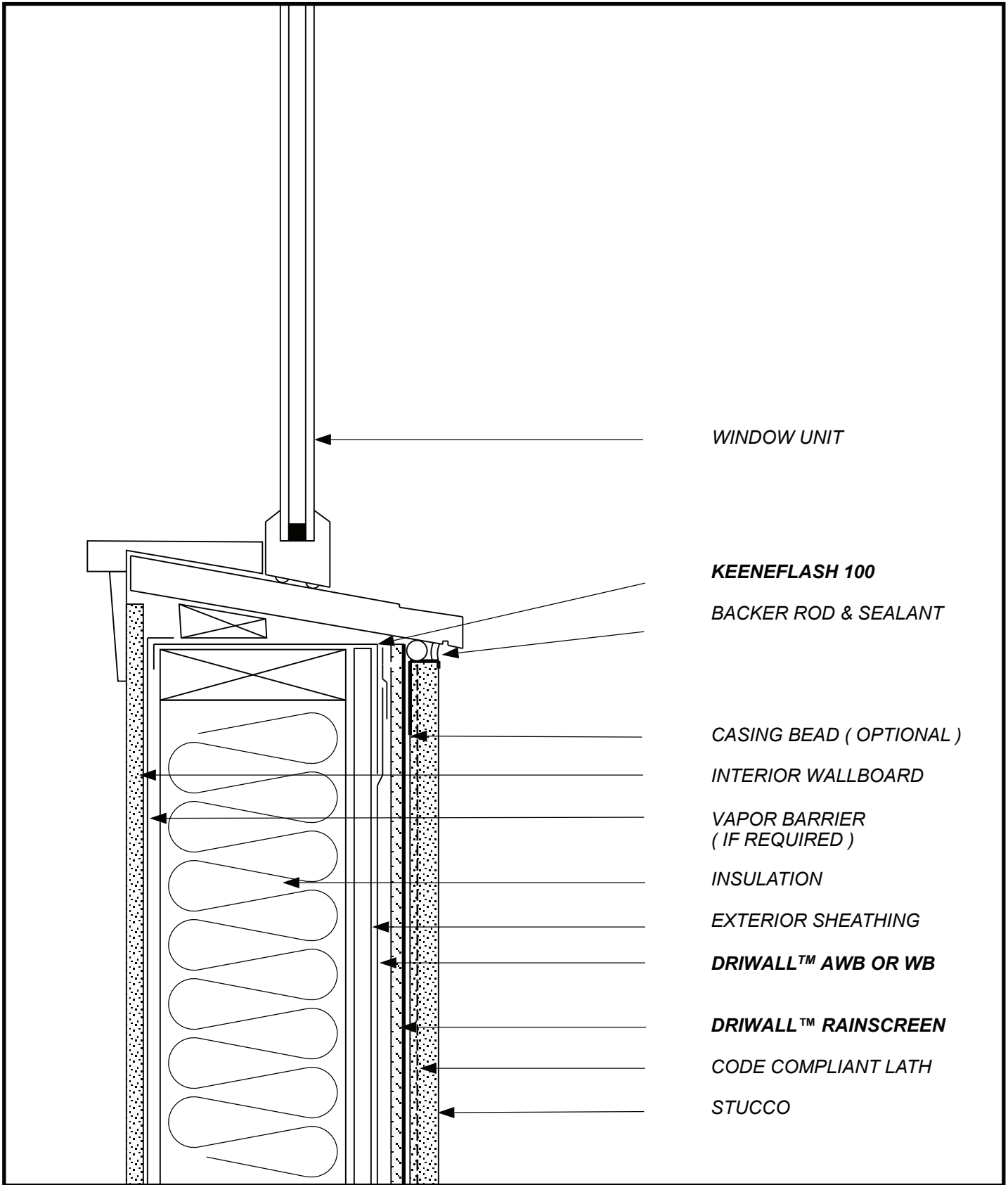


SKETCH NO: SV-9

DATE: 09/12/19

SKETCH:
**STUCCO VENEER
 INTERNAL CORNER**

Keene Building Products
 P.O. Box 241353 Cleveland, OH 44124
 P (877) 514-5336 F (440) 605-1120
 www.keenebuilding.com



WINDOW UNIT

KEENEFLASH 100

BACKER ROD & SEALANT

CASING BEAD (OPTIONAL)

INTERIOR WALLBOARD

VAPOR BARRIER
(IF REQUIRED)

INSULATION

EXTERIOR SHEATHING

DRIWALL™ AWB OR WB

DRIWALL™ RAINSCREEN

CODE COMPLIANT LATH

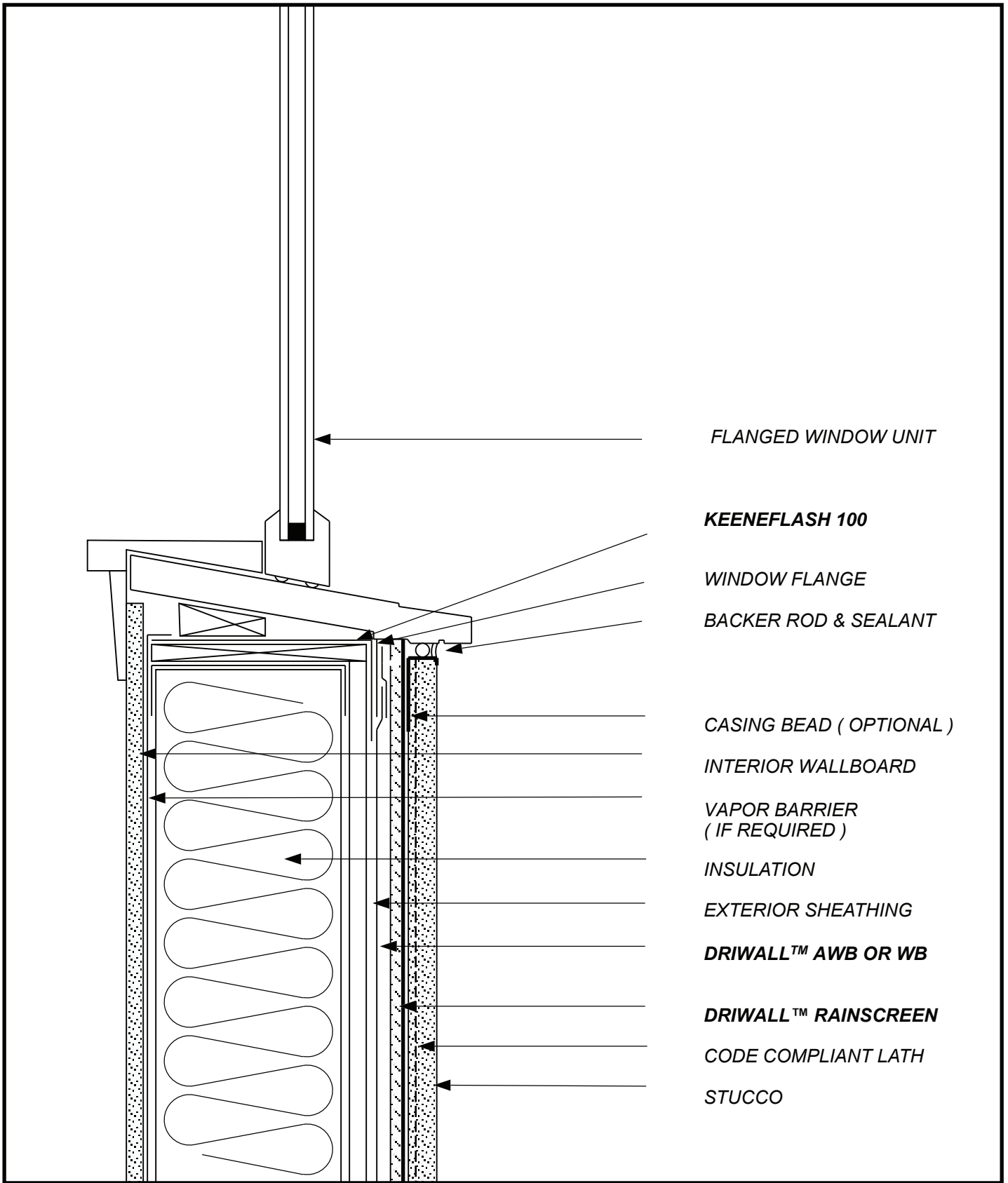
STUCCO

SKETCH NO: **SV-10**

DATE: **09/12/19**

SKETCH:
**STUCCO VENEER
WINDOW SILL 1**

keene Building Products
 P.O. Box 241353 Cleveland, OH 44124
 P (877) 514-5336 F (440) 605-1120
 www.keenebuilding.com



FLANGED WINDOW UNIT

KEENEFLASH 100

WINDOW FLANGE

BACKER ROD & SEALANT

CASING BEAD (OPTIONAL)

INTERIOR WALLBOARD

*VAPOR BARRIER
(IF REQUIRED)*

INSULATION

EXTERIOR SHEATHING

DRIWALL™ AWB OR WB

DRIWALL™ RAINSCREEN

CODE COMPLIANT LATH

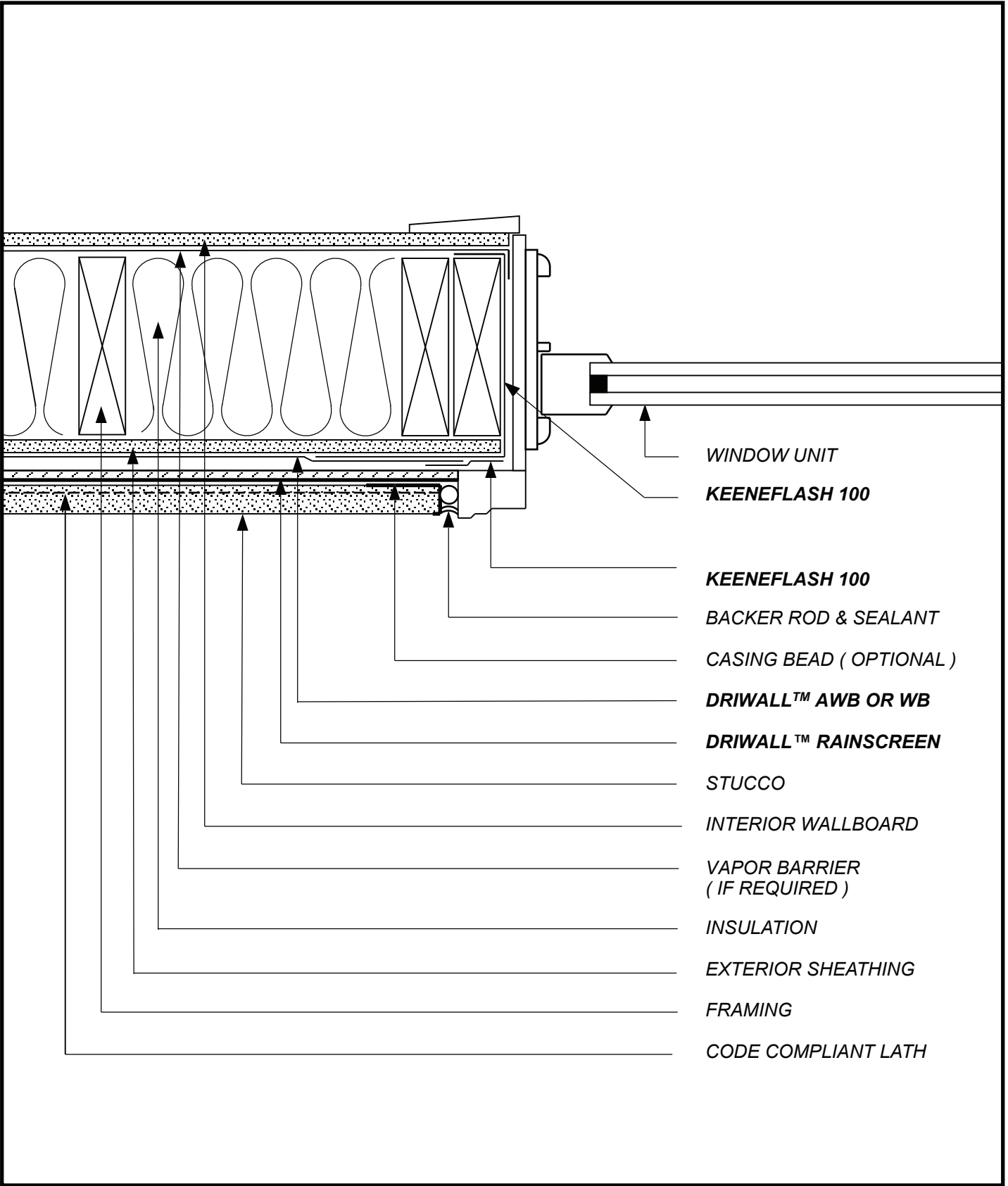
STUCCO

SKETCH NO: **SV-11**

DATE: **09/12/19**

SKETCH:
**STUCCO VENEER
FLANGED WINDOW SILL**

Keene Building Products
P.O. Box 241353 Cleveland, OH 44124
P (877) 514-5336 F (440) 605-1120
www.keenebuilding.com



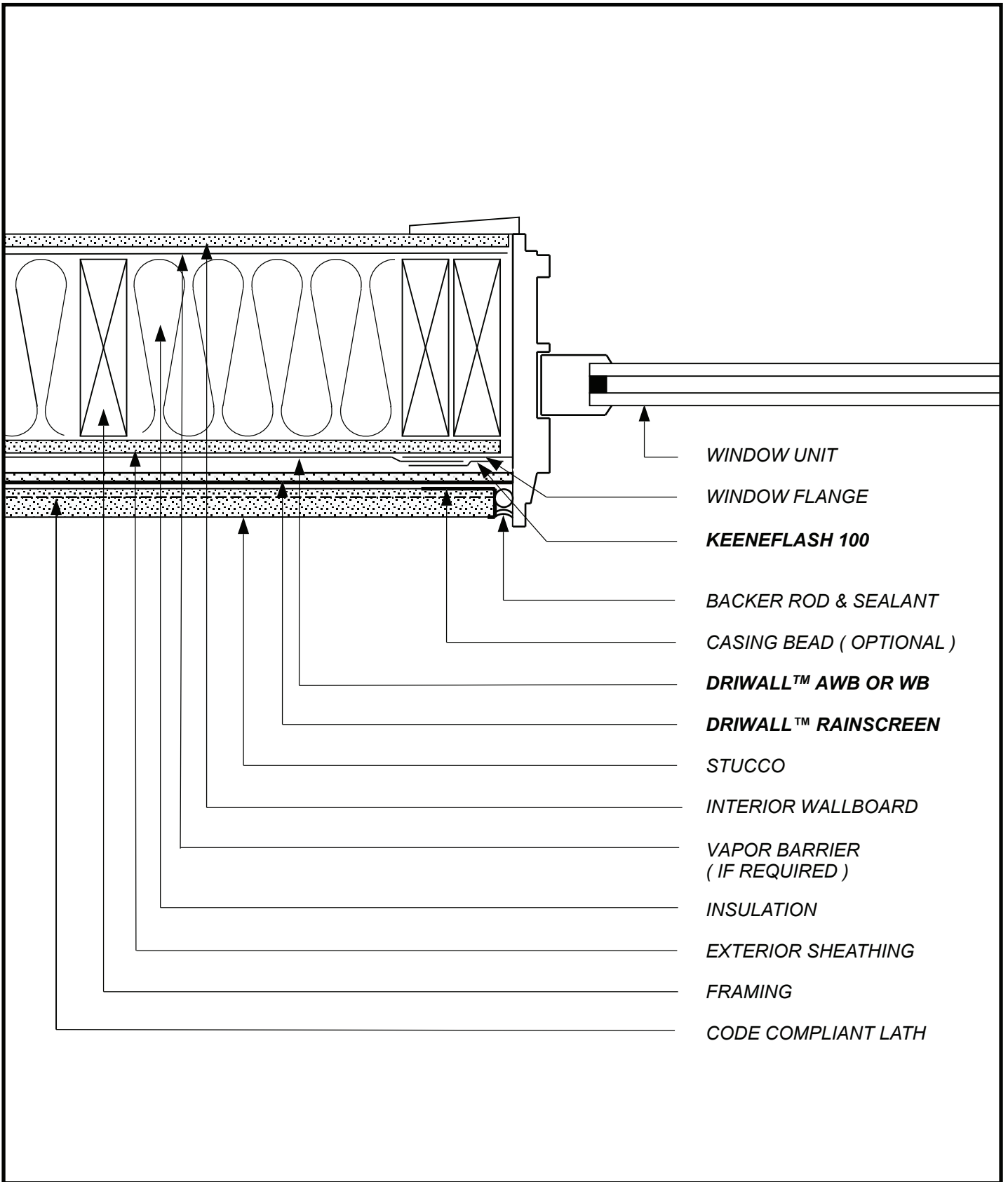
- WINDOW UNIT
- KEENEFLASH 100
- KEENEFLASH 100
- BACKER ROD & SEALANT
- CASING BEAD (OPTIONAL)
- DRIWALL™ AWB OR WB
- DRIWALL™ RAINSCREEN
- STUCCO
- INTERIOR WALLBOARD
- VAPOR BARRIER
(IF REQUIRED)
- INSULATION
- EXTERIOR SHEATHING
- FRAMING
- CODE COMPLIANT LATH

SKETCH NO: SV-12

DATE: 09/12/19

SKETCH:
**STUCCO VENEER
 UNFLANGED WINDOW JAMB**

Keene Building Products
 P.O. Box 241353 Cleveland, OH 44124
 P (877) 514-5336 F (440) 605-1120
 www.keenebuilding.com



- WINDOW UNIT
- WINDOW FLANGE
- KEENEFLASH 100**
- BACKER ROD & SEALANT
- CASING BEAD (OPTIONAL)
- DRIWALL™ AWB OR WB**
- DRIWALL™ RAINSCREEN**
- STUCCO
- INTERIOR WALLBOARD
- VAPOR BARRIER
(IF REQUIRED)
- INSULATION
- EXTERIOR SHEATHING
- FRAMING
- CODE COMPLIANT LATH

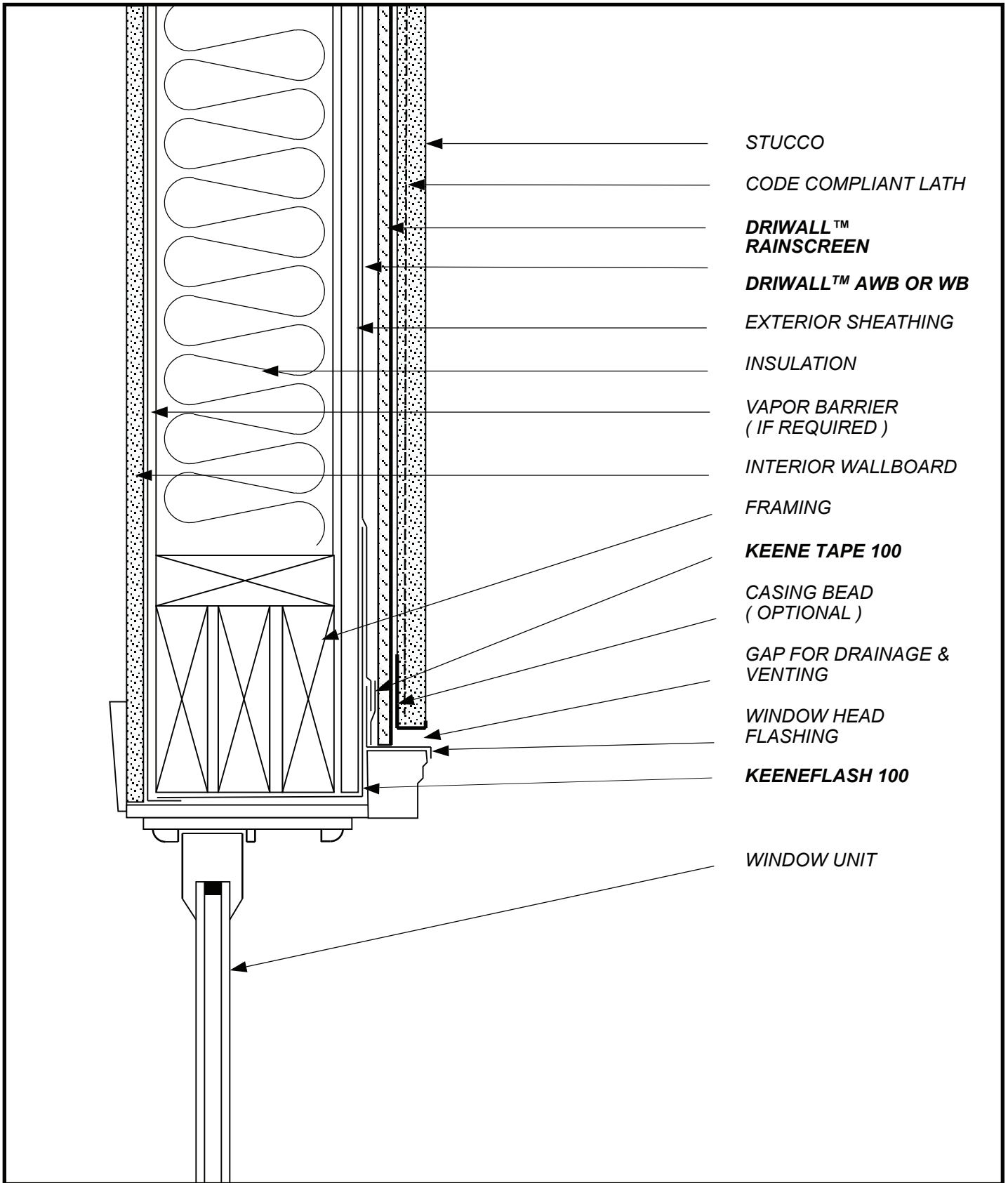
SKETCH NO: **SV-13**

DATE: **09/12/19**

SKETCH:
**STUCCO VENEER
 FLANGED WINDOW JAMB**



Keene Building Products
 P.O. Box 241353 Cleveland, OH 44124
 P (877) 514-5336 F (440) 605-1120
 www.keenebuilding.com



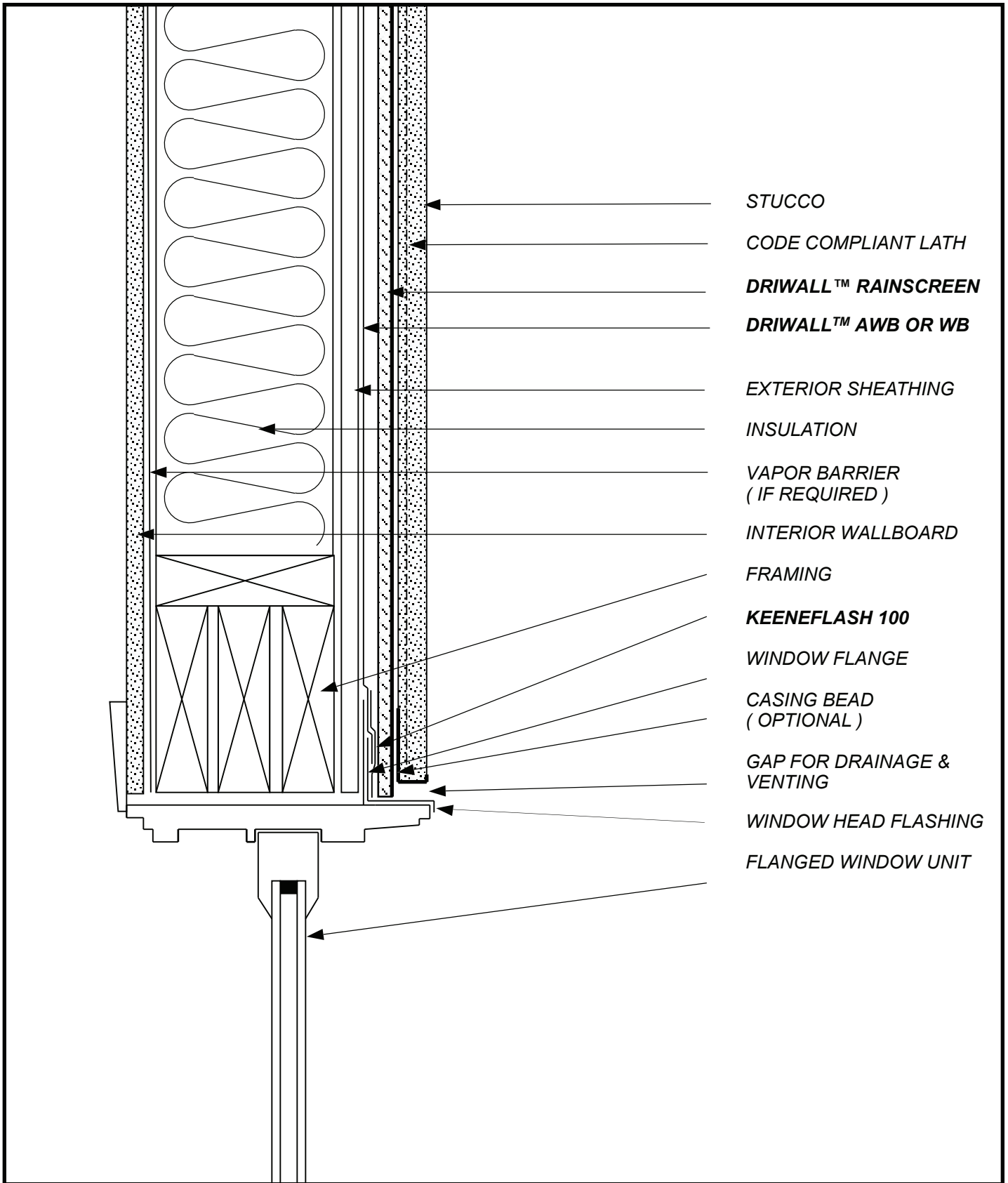
- STUCCO
- CODE COMPLIANT LATH
- DRIWALL™**
RAINSCREEN
- DRIWALL™ AWB OR WB**
- EXTERIOR SHEATHING
- INSULATION
- VAPOR BARRIER
(IF REQUIRED)
- INTERIOR WALLBOARD
- FRAMING
- KEENE TAPE 100**
- CASING BEAD
(OPTIONAL)
- GAP FOR DRAINAGE &
VENTING
- WINDOW HEAD
FLASHING
- KEENEFLASH 100**
- WINDOW UNIT

SKETCH NO: **SV-14**

DATE: **1/1/11**

SKETCH:
**STUCCO VENEER
UNFLANGED WINDOW HEAD**

keene Building Products
 P.O. Box 241353 Cleveland, OH 44124
 P (877) 514-5336 F (440) 605-1120
 www.keenebuilding.com



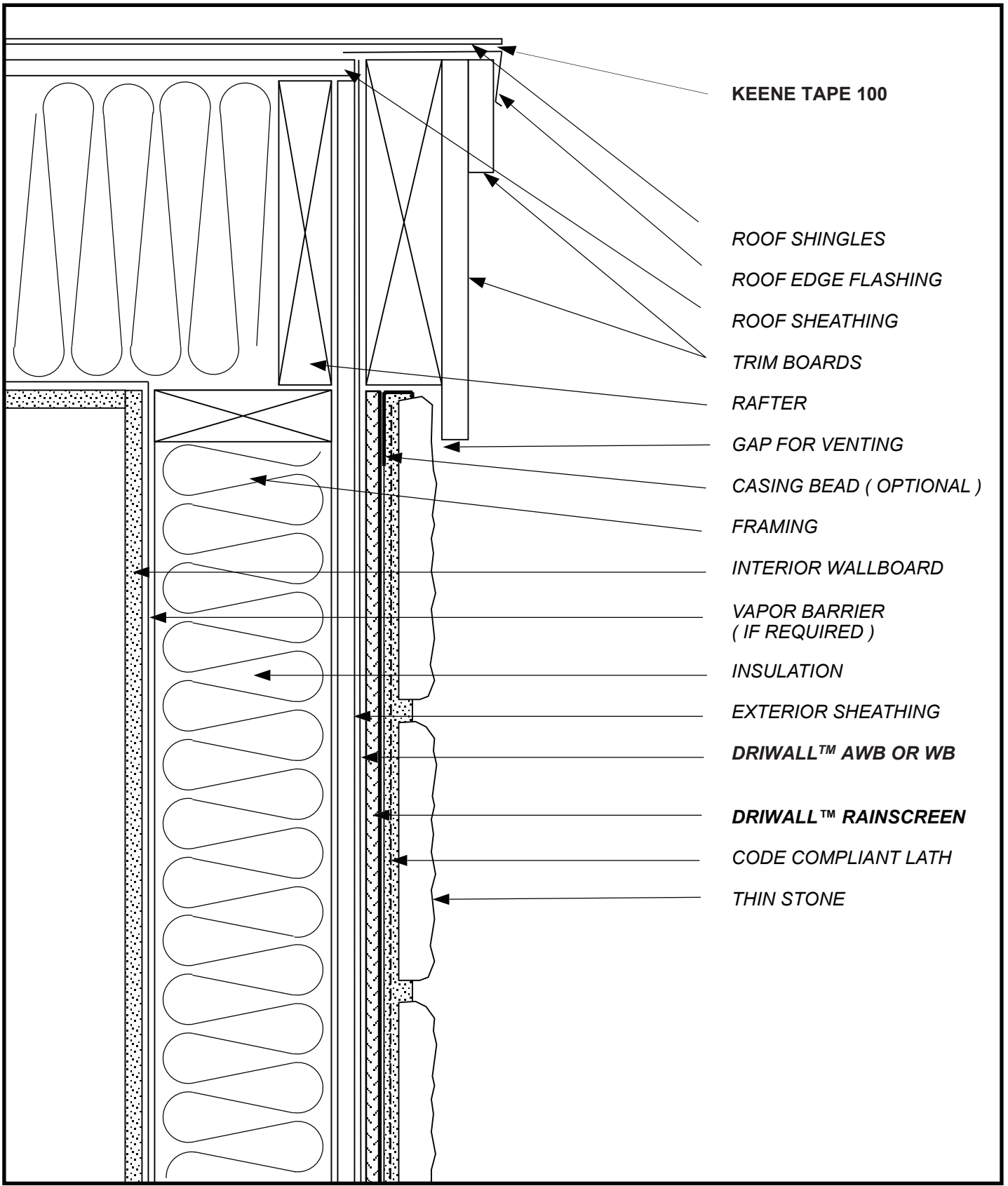
- STUCCO
- CODE COMPLIANT LATH
- DRIWALL™ RAINSCREEN**
- DRIWALL™ AWB OR WB**
- EXTERIOR SHEATHING
- INSULATION
- VAPOR BARRIER
(IF REQUIRED)
- INTERIOR WALLBOARD
- FRAMING
- KEENEFLASH 100**
- WINDOW FLANGE
- CASING BEAD
(OPTIONAL)
- GAP FOR DRAINAGE &
VENTING
- WINDOW HEAD FLASHING
- FLANGED WINDOW UNIT

SKETCH NO: SV-15

DATE: 09/12/19

SKETCH:
**STUCCO VENEER
FLANGED WINDOW HEAD**

Keene Building Products
 P.O. Box 241353 Cleveland, OH 44124
 P (877) 514-5336 F (440) 605-1120
 www.keenebuilding.com



- KEENE TAPE 100
- ROOF SHINGLES
- ROOF EDGE FLASHING
- ROOF SHEATHING
- TRIM BOARDS
- RAFTER
- GAP FOR VENTING
- CASING BEAD (OPTIONAL)
- FRAMING
- INTERIOR WALLBOARD
- VAPOR BARRIER (IF REQUIRED)
- INSULATION
- EXTERIOR SHEATHING
- DRIWALL™ AWB OR WB
- DRIWALL™ RAINSCREEN
- CODE COMPLIANT LATH
- THIN STONE

SKETCH NO: **TSV-16**

DATE: **09/12/19**

SKETCH:

**THIN STONE VENEER
TOP OF WALL**

keene Building Products
 P.O. Box 241353 Cleveland, OH 44124
 P (877) 514-5336 F (440) 605-1120
 www.keenebuilding.com



HOW IT ALL BEGAN

Starting as a plastic manufacturing company in 2002, KEENE has continually innovated new construction tools to improve product performance for the market. At first, KEENE only manufactured entangled net products in applications that had coatings and concrete all around them. Today, our diverse capabilities include blending powders and creating chemicals. In addition to our expertise in plastics extrusion we have expanded our expertise to floor preparation products, below grade systems, roofing, plastic fabricating, and 3D filament.

CREATIVE THINKING & ENTREPRENEURIAL SPIRIT

The creative juices flow here, and our highly educated, professional team is one of the best and brightest in the construction industry. Our company sits in a hotbed for start-ups and entrepreneurial atmosphere in Cleveland, Ohio. Northeastern Ohio is one of the most thriving plastics regions in the world with some of the best universities on polymer education within minutes of our research facilities. We think we represent this spirit as our business grows and we employ more people in all facets of our business.

EXPERTS IN MANUFACTURING & SUSTAINABILITY

Since we launched in 2002, KEENE has acquired companies that began in the 1910's, 1950's, 2000's. That "grey hair" helped us create stability and manufacturing expertise, but we offer more. The platform we built can grow far into the future and sustain more customers and markets. People have thought of KEENE as merely a filament manufacturer, **think of us as the innovation company for apartment noise control, building envelope, roofing, and floor preparation.**

Keene Building Products is an American manufacturer of 3-dimensional filament products for the building envelope and noise control markets.

ADDITIONAL MANUFACTURING CAPABILITIES

[Continental Products, Ltd.](#) is an American manufacturer of specialty coatings for flooring, industrial, horticultural, and wood/log applications.

[Dependable, LLC](#) is an American manufacturer of professional grade floor products for repair, restoration, and new construction.

[Keene Village Plastics](#) is a precision manufacturer of Thermoplastic Welding Rod and 3D Printing Filament.

[Platform Performance Cements](#) is a manufacturer that provides performance driven underlayments and concrete repair products with a new advanced technology, Synthecem™.